

# 4-H UPDATE

May 2025

Garnett Office  
411 S. Oak  
PO Box 423  
Garnett KS 66032-0423  
Phone: 785-448-6826  
FAX: 785.448.6153

Lyndon Office  
128 W. 15th  
PO Box 400  
Lyndon KS 66451  
Phone: 785-828-4438  
FAX: 785.828.3427

Ottawa Office  
1418 S. Main,  
Suite 2  
Ottawa KS 66067  
Phone: 785-229-3520  
FAX: 785.229.3527

## GREAT THINGS HAPPENING....

Congratulations to the Frontier District Seniors! Thank you for your leadership and we wish you all the best in your future endeavors while you continue to strive "To Make the Best Better"! Be sure to watch for the Senior Spotlight posts on social media!

Brody Barnes, L 13; Amelia Behrends, SH; Emma Cain, SSC; Gracie Cameron, AR; Gunner Ellington, SNS; Cole Erwin, RW; Celab Hepner, RW; Carter Hepner, RW; Calla Higbie, ATB; Evan Hough, FOP; Brook Hughes, L13; Haylee Lanham, SS; Sydnee Lauridson, LL; Jotham Meyer, PGB; Hank Newton, CH; Sayleen Partida, L13; Brynn Perry, RW; Allison Reeser, MJH; Karlie Stinebaugh, PGB; Liam Vandruff, BG; Allyson Williams, ATB; Austin Wooten, PGB; Kendall Young, LL.

## **Tagging for State Shows**

Livestock tagging (previously known as ("last call") for state shows (KSF, KJLS, etc.) for Frontier District 4-H members will be **May 30th**, 5:00-6:00 p.m., at the Franklin County Fairgrounds, 220 W. 17th, in Ottawa. Staff will not enter trailers. Be prepared to tag your own animals!

## **2025 Fair Books**

Anderson County Fair Book will be available in the office and online in the middle of June.

Osage County Fair Book is on the [website](#) May 1st.

Franklin County Fair Book is on the [website](#) May 3rd.

## AT A GLANCE

- [Calendar](#)
- [Enrollment](#)
- [Setting Project Goals](#)
- [Kansas Clover Classroom](#)
- [Rock Springs Camp](#)
- [Scholarships](#)
- [Entomology](#)
- [Horse Project Updates](#)
- [District Clubs](#)
- [Anderson Activities](#)
- [Osage Opportunities](#)
- [Franklin Festivities](#)
- [Meet the Staff](#)

## OFFICES CLOSED

- May 26th
- June 19th
- July 4th

# 4-H Calendar

## MAY

**May 1** Market Beef Nominations Due  
**May 1** Last Day to Add/Drop Projects  
**May 3** Shutterbug; Botanica Garden  
**May 3-4** [Gary Fuller Spring Classic](#)  
**May 6** OS CO. Small Animal Weigh-In  
**May 7** AN CO. Small Animal Weigh-In  
**May 10** Entomology Meeting  
**May 24** [Blazin' the Ring Spring Classic](#)  
**May 26** All Offices Closed  
**May 27** OS CO. Fav. Foods Contest  
**May 28** FR CO. Fav. Foods Contest  
**May 29** AN CO. Fav. Foods Contest  
**May 30** State Tagging  
**May 31** Anderson County spring show

[Local Kansas Spring Shows](#)

## JULY

**July 10-12** Richmond Free Fair  
**July 14-19** Franklin County Fair  
**July 16-19** Osage City Fair  
**July 28-Aug 1** Anderson County Fair

## AUGUST

**Aug. 5-8** Overbrook Fair

## JUNE

**June 1** Horse ID Papers Due  
**June 3** SE Area Livestock Judging Contest  
**June 5** Last Day to Order Small Animal DNA Envelopes for Nominations  
**June 10** Board Game Day Camp in Garnett  
**June 12** SE Area Photo and FCS Judging Contest  
**June 13-15** State Geology Trip  
**June 15** Small Animal Nominations Due  
**June 16** Pizza Day Camp in Ottawa  
**June 27** Horticulture/Outdoor Day Camp in Osage County  
**June 27-28** Insect Spectacular

## SEPTEMBER

**Sept. 5-19** Kansas State Fair

## OCTOBER

**Oct.** 2026 4-H Enrollment Open



# A message from your 4-H Agent

Dear Class of 2025,

Wow! Can you believe you are almost done with high school? It feels like just yesterday when you joined 4-H at seven years old. Over the years, I have watched you learn, grow, and become amazing individuals. You have worked hard, made friends, and built memories that will last a lifetime.

Recently, I read a book called "The Alchemist" by Paulo Coelho. It tells the story of a young shepherd named Santiago who dreams of finding treasure. He travels far and faces many challenges, but he learns that the real treasure is about following his heart and dreams.

Just like Santiago, I hope you never stop following your own personal legend. Life is full of adventures, and you are the authors of your own stories. As you step into the future, remember to keep dreaming big and chasing your goals.

I am so proud of all of you and can't wait to see what amazing things you will do next!

Sincerely, Jessica Flory

# District Details

## Leaders have you...

### Review

- Looked over deadlines & dates?
- Promoted enrollment
- Checked Volunteer enrollment
- Encouraged 4-H members to ask a friend to attend meetings
- Reminded all 4-H members and parents who are volunteers to enroll via 4-H Online

### To-Do

- Check mailbox at the Extension Office
- Report from 4-H Council Meetings
- Update Volunteer Renewal information



### Animal Science Newsletter

Did you know that there is a monthly newsletter written by the KSU Animal Science Department. Be sure to check it out, as they write important topics, such as camps coming up, upcoming events, topics you might need to know in the barn. Check out the link above to find information you might need to know!



### Keeping Track of Project Goals

After choosing project goals, it is important to keep track of what you have learned and accomplished. What new skills have been gained? Who is helping you along the way? Here is your reminder to take pictures and notes to make filling out PRRF's so much easier! There are resources to help members!



### Kansas Clover Classroom

The Kansas Clover Classroom is an amazing 4-H project supplemental guide available to 4-H families. Taking photos, designing a cabinet, building rockets, collecting insects, tending to livestock...those activities are part of a much bigger, project-based learning process to prepare youth for the future. Which challenge will you take on?



### Rock Springs Camp 2025

Summer Camp 2025 registration is filling up! There are **now seven** different traditional 4-H camp dates in June and July. We recommend **Session two!** There are also three CIT dates in June and July and two LIT dates in June. They have also added a two night mini camp for rising 1st-3rd graders, as well as a Specialty camp for rising 6th-9th graders. Transportation schedules are being finalized. Check out which date and/or camp works best for you! Camperships (scholarships) are available for all levels!



### Add/Drop Deadline

The Extension Office will need to be contacted to have information changed. Any adding or dropping of projects must be done by **May 1st** in order for the member to enter in the 4-H divisions of the Fair. Direct all questions to the Extension Office.



# District Details

## Members have you... Checked off

- Re-Enrolling in 4-H?
- Asked a friend to join
- Signed Up to Present at a Club Meeting?
- Set Project Goals?
- Finalized Projects for the year?

## Review

- 4-H members: ask a friend to attend meetings
- Remind all 4-H members and parents who are volunteers to enroll via 4-H Online
- Provide officers and clubs leadership updates as soon as possible to the Extension Office



## Shutterbug Events

Shutterbug events are photography workshops put on across the state, and are a perfect opportunity to develop new camera skills, hone your creative talents and try new photography techniques. Workshops are typically scheduled as a morning session and concentrate on a variety of aspects of composition. Sessions focus on topics including Portfolio, Camera Features, Panning, Close-ups, Aperture Settings & Kaleidoscopes/Reflections.



## Entomology Meeting

The May Entomology project meeting will be on **May 10th** beginning at 1:00 p.m. starting at the Allen County Extension Office Meeting Room. We will be going out and trying to collect some insect specimens. Bring your nets, kill jars and specimen containers.



## Insect Spectacular

Beetles, bugs, dragonflies and more! It's time to get registered for the 33rd Insect Spectacular. The State Entomology Workshop will be held **June 27th and 28th**. Activities will take place at the Butler County Community Building located at 200 N. Griffith Street in El Dorado, Kansas. More information to come!



## State Geology Trip

A variety of workshops and activities are planned for Friday and Saturday evenings. A variety of stops are planned on the Field Trip Saturday and Sunday. Project members are encouraged to participate in judging and quiz bowl. A catered supper will be provided Saturday evening for \$15.00 per person and we will have a variety of educational publications for sale through the Kansas Geological Survey. **June 13-15** at Cloud County Community College. Registration Due **May 16th**.

# District Details

## Member/Volunteer Enrollment

The new 4-H year began **October 1st**, so it is time for new and returning 4-H members and volunteers to enroll. All returning 4-H members and volunteers should be re-enrolled by December 1st. Projects and/or clubs will need to be added when enrolling. Project years should auto-populate, if not, please call the office. Families are also encouraged to confirm the email address and phone numbers for the family and for each member or volunteer. Direct any questions or concerns to the Extension Office.

- [Click here to enroll](#)
- Create an account
- Select your participation type
- Choose your county & club
- Select your projects (remember, once you have enrolled, if you need to add more, message your Extension Office.)
- Review consent forms, there are more this year!
- Enter member information
- Click submit!



## Horse Project Updates

The [Kansas 4-H Horse ID Certificate \(P1039\)](#) has been updated for the 2025 4-H program year. Beginning with the 2025 4-H program year, please use the new form and destroy previously used 4-H Horse ID Certificates. As a reminder, to properly identify your horse, complete the 4-H Horse ID Certificate, have your Extension Agent sign it and copy it. A COPY of the Horse ID Certificate is kept on file in the Extension Office and the 4-H Horse member maintains the ORIGINAL certificate. The original certificate is presented by the 4-H member to show staff for check-in at the local 4-H horse shows. Beginning in 2025, registration papers WILL NOT be accepted to identify horses for the 4-H Horse project. An [example of the Horse ID Certificate](#) is available online



## Important Livestock Dates

Check out the Youth Livestock Program Newsletter or “like” the Kansas State Youth Livestock Program on Facebook!

**5/1/25:** Market Beef Nominations Due for KSF & KJLS

**6/5/25:** Last day to order Small Animal Livestock DNA Envelopes for nominations

**6/15/25:** Commercial Heifer, ALL Swine, ALL Sheep and ALL Meat Goat Nominations Due for KSF & KJLS.

**9/5-14/25:** Kansas State Fair

**10/3-5/25:** Kansas Jr. Livestock Show



## KSF & KJLS Information

Families planning to participate in the Kansas State Fair Grand Drive or the Kansas Junior Livestock Show will need to Order DNA envelopes. Families will purchase envelopes directly through ShoWorks for each animal to be nominated. The cost will be \$12/animal.

1) DNA envelope orders will close **June 5th** for small livestock. Families must get envelopes ordered early! DO NOT WAIT!

2) Market Beef Nominations due **May 1st**. Commercial Heifer, ALL Swine, ALL Sheep and ALL Meat Goat Nominations are due **June 15th**.

3) NOTE: ENTRY IS ONLINE ONLY!







# GRAND DRIVE & KJLS IMPORTANT DATES

<b>April 20</b>	<b>Last Day to Order Beef DNA Envelopes</b>
<b>May 1</b>	<b>Market Beef Nominations Due Online &amp; DNA Postmarked</b>
<b>June 5</b>	<b>Last Day to Order Small Livestock DNA Envelopes</b>
<b>June 15</b>	<b>Small Livestock Nominations Due Online &amp; DNA Postmarked</b> <ul style="list-style-type: none"><li>-Market Swine, Commercial Breeding Gilt</li><li>-Market Lamb, Commercial Breeding Ewe</li><li>-ALL Meat Goat (<i>Market &amp; Breeding</i>)</li></ul>
	<b>Commercial Heifer Nominations Due Online &amp; DNA Postmarked</b>
	<b>Registered Breeding Heifer Papers in Exhibitor's Name</b>
	<b>Registered Steer Papers in Exhibitor's Name</b>
	<b>Registered Breeding Gilt Papers in Exhibitor's Name</b>
<b>July 1</b>	<b>Registered Breeding Ewe Papers in Exhibitor's Name</b>
<b>July 15</b>	<b>Kansas State Fair Grand Drive Entry Deadline</b>
<b>July 25</b>	<b>Kansas State Fair Grand Drive Late Entry Deadline</b>
<b>August 15</b>	<b>KJLS Entry Deadline</b>
<b>August 31</b>	<b>KJLS Late Entry Deadline</b>
<b>Sept. 5 - 7</b>	<b>Kansas State Fair Grand Drive</b>
<b>Oct. 3 - 5</b>	<b>KJLS</b>

\*All market animals must be nominated to be eligible for either show, regardless of breed or gender.

\*\*All commercial breeding females must be nominated to be eligible for either show.

\*\*\*Registered breeding females must be in the exhibitor's name by the appropriate date to be eligible for either show. Refer to show rules for details.

\*\*\*\*All meat goats, including market, commercial breeding does, and registered breeding does must be nominated to be eligible for either show.



# cool careers

## Student Edition



**1**

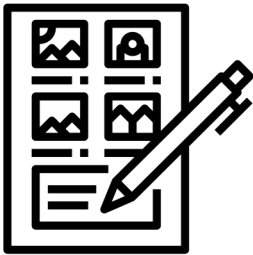
Want to know how to get started with our NEW Cool Careers contest?

**2**

You, or a group up to four 4-H members, select a job or profession within one of your 4-H projects you want to learn more about.

**3**

Identify someone in that profession you would like to interview and get the ball rolling!



Plan your interview questions & storyboard



Interview your professional & video/film



Edit video segments & add music & graphics

Use technology you already have access to:  
phone, tablet,  
video camera  
or laptop!

For video examples,  
graphics, music content and  
registration form visit  
**[www.kansas4-H.org](http://www.kansas4-H.org)**



# HPAI:

## Highly Pathogenic Avian Influenza

Highly pathogenic avian influenza, or HPAI, is a rapidly spreading viral disease that can infect many types of birds. Avian influenza, often called avian flu or bird flu, can be common, but some strains are highly pathogenic, which means they are more deadly. Introduced by migrating wild birds, HPAI can spread through spring migration and affect all domestic poultry — small and backyard flocks as well as commercial industries.

Poultry with HPAI do not survive the illness. Vaccines for HPAI are not readily available.

### Signs of Avian Influenza

- Coughing and sneezing
- Difficulty breathing
- Extreme depression
- Lack of energy
- Decrease in feed or water intake
- Swelling or purple discoloration of head, eyelids, comb, wattle and legs
- Decrease in egg production
- Sudden unexplained death

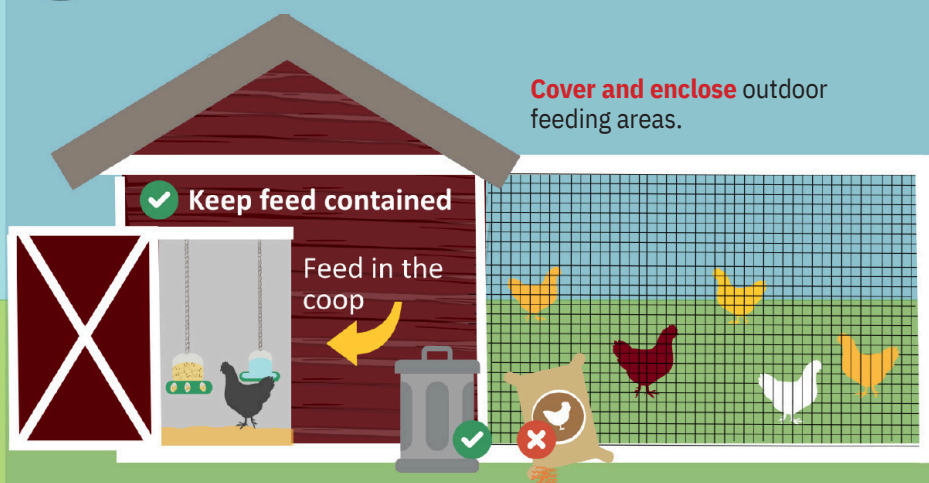
Biosecurity is your best option to prevent HPAI from entering your small or backyard poultry flock.

### Here is what you can do:

## Protect Your Small Flock from Avian Influenza

1

**Avoid** attracting wild birds and waterfowl to your home or farm. Song birds, sparrows, starlings, etc. are **low risk**.



- Clean up** feed spills.
- Reduce** puddles and standing water.
- Avoid** visiting ponds and streams, especially with pets.
- Do not** move birds from farm to farm.
- Isolate** new birds.



2

**Limit** or **halt** travel with your birds to sales, shows and swaps. Ensure you have clean hands, clothes, and footwear before handling your birds if you attend events. **Do not** allow others to handle your birds.



3

**Limit** your birds' visitors. If someone must visit your birds: discuss where they have been. Have them wash their hands and wear clean clothes and footwear.



Call your veterinarian if your flock shows signs of influenza or you suspect exposure. No veterinarian? Call the Kansas Department of Agriculture's Division of Animal Health at 785-564-6601.



# EGG SHOOT

The word "EGG" is in a large, black, serif font. The word "SHOOT" is also in a large, black, serif font, but the two 'O's are replaced by yellow eggs. Each egg has a red target with a central bullseye and crosshairs. The background of the top half of the image is a blue gradient with white light rays emanating from behind the eggs.

**Join us for a good cause on  
Sunday, May 4, 2025 at 1 pm  
at 15303 S Osage Rd, Burlingame KS 66413**

**Cost is \$25 to shoot (cash or check only)**

**This money raised from shooters fee will go to  
Osage Co 4-H Shooting Sports**

**Registration starts 12:30 pm**

**There will be optional \$5 entry in winners pot for cash prize!  
50 cent ante (per round) goes to shooter(s) with hit. Bring your quarters!!**

**Shooting distances  
85yds 22LR & 17HM2  
100 yds 17 HMR & 22 Mag  
200 yds all other Rifles**

**Bring your lawn chairs and snacks  
If raining at time of shoot we will reschedule**



# Anderson Activities

## County Council Committees

National 4-H Week	All Clubs
Achievement Night Celebration	Lucky 13
County Wide Fun Event	Star Shooting
County Wide Community Service	Cherry Mound
Club Days	Lucky 13
Recognition of 4-H Seniors	Cherry Mound
District Wide Day Camp	Star Shooting
New Member Event	All Clubs
After Fair Pool Party Treats	Seekers Not Slackers
District Activity	Seekers Not Slackers



### 4-H Council Meeting

Our next meeting will be **May 12, 2025 at 7:00 p.m. in the Extension Office Meeting Room. Club Leaders will meet at 6 pm.** Be sure to attend and represent your club as there must be a leader and youth representative from each club at every meeting in order for the club to be on track to receive a purple seal at year's end.



### Animal Weigh-In and Tagging Dates

Small Animal: **May 7, 2025, 5-7 p.m. at the fair grounds.**

**Note:** Per Fair board rules, all tagging for county fair must be done prior to or at weigh-in only. If missed, the animal will be ineligible to be shown at the Anderson County Fair.



### Anderson County Born Nominations Form

Anderson County Born Nomination Forms for the fair are **due** in the Garnett office by **July 11th**. Forms are available at the Extension office and on our Extension webpage. Youth enrolled in the Rabbit, Fowl or Breeding Livestock project(s) must own and have possession of his/her animal(s) by June 1st.



### Horse ID Paper

This identification certificate must be submitted to the county or district agent by **June 1** of the current year to qualify this animal for 4-H horse shows, including the state show. The original ID form with pictures must be kept by the 4-Her(s) and presented at Fair or State Fair check-in. A copy will be kept in the county office. Please attach a standard-size picture on the back right-hand corner.



### Favorite Foods Contest-May 29<sup>th</sup>, 9 a.m.

Do you like themes? Do you like planning table settings and menus around those themes? Then you are in luck! ! Please refer to the flyer below for information.



### Board Game Day Camp-June 10<sup>th</sup>, 9-3 pm

Join us for a day of fun and games!

Play your favorite board games—and maybe even discover a new one or two! We'll spend the day playing, painting a special souvenir, and making great memories with others.

Games, lunch, snacks, and drinks are all included—just bring your game face! See flyer below. **Cost: \$7** Pay at the door—cash only, please.



### Fair Information and Pre-Entry

**Richmond free Fair: July 10th - 12<sup>th</sup>, 2025.**

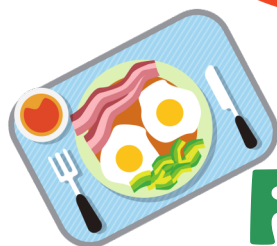
**Anderson County Fair: July 28th – August 1st, 2025.**

Pre-fair judging will be held July 26th, 2025. All Fair entries must be pre-entered online. A link will be available June 9th - July 11th. Anyone not entered during the allotted time will be assessed a \$25 late fee.

ANDERSON COUNTY



Open to all 4-H members  
ages 7-18 enrolled in the  
Foods Project



# FAVORITE FOODS CONTEST

**AN CO  
COMMUNITY  
BUILDING**

700 NORTH LAKE RD.  
GARNETT, KS 66032

Bonus: A FACS judging contest will also  
be available from 9 am - 12 pm.

For more information:

<https://www.frontierdistrict.k-state.edu/4-h/anderson-eventsandinformation/>

**MAY  
29,  
2025**

**Set up: 9 am  
Judging: 10 am**

Questions: Contact Jeanette at 785-448-6826



Use the QR code or the following link to  
register by May 22, 2025

<https://bit.ly/4jRSIuL>

**K-STATE**  
Research and Extension



Frontier  
District

Kansas State University Agricultural Experiment Station and Cooperative Extension Service  
K-State Research and Extension is an equal opportunity provider and employer.

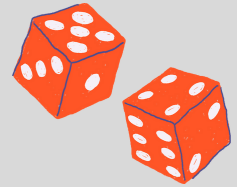
**K-STATE**  
Research and Extension



Frontier  
District



# Board Game Bonanza Day Camp!



Open to 4-H and non-4-H youth.

Fun for ages 7-12!

Sign up Now!

If older than 12, please sign up as a teen helper!

**June 10, 2025**  
**9 am-3pm**  
**Anderson County**  
**Community Building**

**REGISTER HERE:**



<https://bit.ly/4IJtct3>

## **Join us for a day of fun and games!**

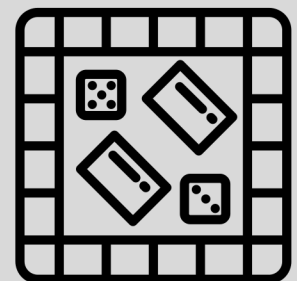
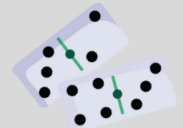
Play your favorite board games—and maybe even discover a new one or two! We'll spend the day playing, painting a special souvenir, and making great memories with others.

Games, lunch, snacks, and drinks are all included—just bring your game face!

**Cost: \$7**

**Pay at the door—cash only, please.**

**Register soon! Limited to first 24 registrants!**



# Osage Opportunities

## County Council

June 30 @ 7 p.m.

Lyndon Extension Office

County Wide Fundraiser	MJH
Club Day	NO
Achievement Night Celebration	WW
District Wide Day Camp	Ambassadors
Council By-laws & National 4-H Week	BG
District Wide Event	LL

## Save The Date:

### OS Favorite Foods Contest:

May 27

### **Style Revue Judging:**

July 9

### **Osage City Fair:**

July 16-19, 2025

### **Overbrook Fair:**

August 5-8



## Osage City Fair Pre-Entry

Osage City Fair Pre-Entry will be June 23rd-July 7<sup>th</sup>. All entries (static, livestock and small animal) must pre-enter for the Osage City Fair using the FairEntry system. Late entries will be charged \$25 per exhibitor. A link will be provided when Pre-entry opens.



## Spring Tagging and Weigh In

Small Animal: **May 6<sup>th</sup>, 2025**, 4-6 p.m. at the Osage City Fairgrounds. Small animals include: bucket calf, and market and breeding swine, sheep and goat.

Youth enrolled in Breeding beef, Dairy, Market and Breeding Meat Goat, Sheep, and Swine must own and have possession of animals by **May 15<sup>th</sup>**.

Youth enrolled in the Rabbit and Poultry project must own/have possession of animals by **June 15<sup>th</sup>**.

A bucket calf must have been born **Jan. 1<sup>st</sup>-May 1<sup>st</sup>** of the current 4-H year.



## Osage County Day Camp

Osage County 4-H Ambassadors will be hosting a Horticulture/Outdoor Day Camp Friday June 27<sup>th</sup> from 9 a.m.-3 p.m. This is open to 4-H and Non 4-H Youth ages 7-12. Location is TBA. To sign up please visit: [bit.ly/hortdaycamp](https://bit.ly/hortdaycamp). For more information please contact the Lyndon Office.



## Osage County Family Nomination Forms

All Osage County Livestock families need to fill out the Family Nomination Form and either return it to the Extension Office or email to Jo at [janstaett@ksu.edu](mailto:janstaett@ksu.edu). This is due by June 1<sup>st</sup>.



## Overbrook Fair Sale Information

The Overbrook Fair sale will be a premium only sale again this year. You will need to make spots for animals to be processed and find your own floor buyers. Contact the office with any questions.



OSAGE COUNTY

# FAVORITE FOODS CONTEST

SHOW OFF YOUR TABLE SETTING AND  
MENU PLANNING SKILLS!

**TUESDAY, MAY 27, 2025**  
**SET UP AT 9 A.M.**  
**JUDGING AT 10 A.M.**



LYNDON COMMUNITY BUILDING  
205 W 10<sup>TH</sup> ST.



OPEN TO ALL ENROLLED OSAGE COUNTY 4-H  
YOUTH ENROLLED IN FOODS & NUTRITION. FACS  
JUDGING WILL ALSO BE AVAILABLE FROM 9  
A.M.-12 P.M.



MORE INFORMATION CAN BE FOUND ON THE OSAGE COUNTY 4-H PAGE AT:  
[HTTPS://WWW.FRONTIERDISTRICT.K-STATE.EDU/4-H/OSAGE-  
EVENTSANDINFORMATION/](https://www.frontierdistrict.k-state.edu/4-h/osage-eventsandinformation/)

REGISTRATION IS DUE BY MAY 20<sup>TH</sup>. SCAN THE QR CODE OR VISIT  
[BIT.LY/OSFAVFOODS](https://bit.ly/osfavfoods) TO REGISTER. CONTACT JO AT THE LYNDON OFFICE  
WITH QUESTIONS. 785-828-4438



**K-STATE**  
Research and Extension



Kansas State University Agricultural Experiment Station and  
Cooperative Extension Service  
*K-State Research and Extension is an equal opportunity provider and  
employer.*

# Franklin Festivities

## County Council

June 2nd, 6:30 p.m. @  
Commission Chambers, 1418 S.  
Main, in Ottawa (down the hall  
from the Extension Office)

Club Day	RR
District Wide Day Camp	BGG & AR
Livestock Buyer Appreciation	SH
National 4-H Week Marketing	FOP & SS
Achievement Night Celebrations	RW
District Wide Event	PGB
Community Service & Fair Goody Plates	AT

## Save the Date

Franklin County Fair;  
**July 14-19, 2025**

## Horse Club Practice

The Franklin County Horse Club next meeting is **April 1<sup>st</sup>** from 6:00 - 8:00 pm. Practices will be every Tuesday and Thursday starting **May 20<sup>th</sup>** weather permitting also from 6:00-8:00 pm. Check out the [Franklin County Horse 4-H Horse Club](#) on Facebook for regular updated information!

## Shooting Sports Practice

**May 29<sup>th</sup>**, at the Fair Grounds, there will be a meeting with Ron Stricker, the auctioneer for the 2025 Fair. You will get to learn about finder buyers, proper thank you's and more from him. If you plan to sell at the Fair this year, we strongly encourage you to come!

## Shooting Sports Practice

Franklin County Shooting Sports will only offer archery for the upcoming year. Practices will be **May 3<sup>rd</sup>** at 8:30 am. Everyone who is wanting to participate this year must be present for this first practice! A well, they are looking for other discipline leaders! Practice dates will be listed when available and will also be sent to those who are enrolled in the project. Direct any and all questions to Becky Cain at [FranklinCountyShootingSports@gmail.com](mailto:FranklinCountyShootingSports@gmail.com) as she is the current program coordinator.

## Favorite Foods Contest

The Franklin County Favorite Foods Contest will be held on **Wednesday, May 28, 2025**, at the First Baptist Church 410 S Hickory St. Set up starts at 9 a.m., with judging following at 10 a.m. Registration closes **May 21<sup>st</sup>**.

You pick a theme, design a table setting and menu to go with that theme, set it up, and talk with the judge! It can be any theme you want; the sky is the limit! The top Intermediate and top Senior will be able to attend the SouthEast Area Contest in Emporia on **June 12<sup>th</sup>**. Register by scanning the QR code or visiting [this link](#). I hope to see you all signed up for this fun day!

## Save the Date; Day Camp

Do you like cooking? Do you also like pizza. Save the date for **June 16<sup>th</sup>**. We will spend the day making homemade pizza dough, learn about how to make a healthy pizza fit into our plate. We will then end the day making a yummy dessert! It will be located at the Ottawa High School, more information coming soon!

# Franklin Festivities

## Franklin County Fair Info.

**Franklin County Born & Raised Forms, Pure Bred, & Family Nominations:** Due **June 16th** for all market species.

**Bucket Calf:** Members enrolled in Clothing or Bucket Calf have paperwork which must be presented at judging time during the Franklin County Fair. Bucket Calf members must present the project record sheet.

**Fair Pre-Registration:** Fair pre-registration forms will be available **May 19th- June 16th**. This includes fashion revue cat/handpet, dog, poultry, rabbit, and livestock. Also, youth who wish to participate in conference-style judging for the following projects will be required to pre-register online: Energy Management, Entomology, Forestry, Geology, Home Environment, STEM, Self-Determined, Shooting Sports, Wildlife and Woodworking. The Extension Office will assign judging times. Direct all questions to the Extension Office.

**Clover bud:** You must call the office to schedule a time for Cloverbud judging. Judging is **July 15th** begins at 12:00 p.m.

Concession Stand Sign up: Sign-up will be open June 1st -16th. Each family will need to have one adult sign up to work as well as every 4-H Member!

**Mr./Miss 4-H:** All properly enrolled Franklin Co. 4-H members who are/will be in high school a few more years are encouraged to apply for Mr. or Miss 4-H. Applications are due by **June 16th**. The mandatory interview will be **July 7th** at the First Baptist Church, 410 S. Hickory, in Ottawa beginning at 10:00 a.m. Deliver or email applications to the Ottawa Office. Call to schedule an interview time!

**Pre-Fair Judging: July 7th**-Clothing, Fiber Arts, Mr./Miss 4-H Interviews; 1st Baptist Church, 410 S. Hickory, Ottawa

**July 14th**-Foods (9 AM-11 AM, club assigned times), CB Hall; Photo & Visual Arts (1:30-4:00 P.M., club assigned times), CB Hall

**July 14th**-Fair Kick-Off 6:00 - 8:00 p.m.

## Franklin County Born (purebred) Forms

ALL pure bred Market/ Breeding species must have papers in the child's name (not family name) by May 1st. Must then turn copy in by June 21st into office, or email Josie at [josie03@ksu.edu](mailto:josie03@ksu.edu).

## Franklin County Fair Updates

Please read the letter attached. For any questions please contact the office.

## Fair Kick off and Food Drive

The 2025 Franklin County Fair Kick off begins at 6:00 p.m. Monday, July 14th. The Fair theme for 2025 is "Giddy Up and Glow" There will be games, food, etc.. Bring your best dance moves!

The Appanoose Trailblazers will be doing a Food Drive this year. More information to come!

## Tagging Due Date for Franklin County Fair

The last date to get your Livestock animals tagged to show at the Franklin County 2025 Fair is **May 15th**. Please call the office to schedule a time to get your animals tagged!





## Franklin County Picnic

Hosted by the Franklin County Area K-State Alumni Club and the K-State Alumni Association

Join fellow Wildcats to celebrate K-State and enjoy some good food and K-State camaraderie.

### Tuesday, June 10, 2025

6 p.m. doors open and check-in

6:30 p.m. dinner and program to follow at 7 p.m.

Celebration Hall, Franklin County Fairgrounds, Ottawa, Kansas

### MENU

A buffet with pork chops and drinks will be served. Please bring a side dish or dessert (to serve 10 to 12 people) with serving utensils clearly marked with your name to share.

### REGISTRATION DETAILS

\$17 per person (aged 12 and over) and \$7 for children up to age 11  
No charge for high school juniors and seniors (classes of 2025 or 2026)

Reservations due by **Monday, June 2, 2025**

K-State Alumni Association will handle the registration via phone 785-532-6260 and online registration: [k-state.com/franklinco](http://k-state.com/franklinco)

Questions? Call Jody Lancaster '88 at 785-418-1567

### SUPPORT A STUDENT

Helping local students pursue their education is more important than ever. This is our main opportunity, and you can help in three ways:

- Contribute to our club's scholarship fund with a tax-deductible donation (For each \$100 contribution to the Franklin County Scholarship Fund, you will receive two picnic tickets.)
- Sponsor a student meal; and/or
- Come to the event and show students what K-State spirit is all about!

### RAFFLE

Please consider donating an item for the raffle. Proceeds from the raffle also benefit the Franklin County Friends of K-State Scholarship Fund. Raffle donations may be brought the night of the picnic.

### K-State guests to include:

- Adam Walker '04, '09, president and CEO, K-State Alumni Association
  - Marshall Stewart, senior vice president for executive affairs, university engagement and chief of staff, Kansas State University
  - Alan Fankhauser '82, associate director of alumni programs, K-State Alumni Association
  - Dalton Simmer, 2025 K-State Student Ambassador
- \*K-State guests subject to change

## Registration is due by June 2, 2025

Please complete and mail the form with your participation information to K-State Alumni Association,  
100 Alumni Center, 1720 Anderson Avenue, Manhattan, KS 66506  
Register online at [k-state.com/franklinco](http://k-state.com/franklinco)

### Registration information:

\_\_\_\_\_ Adult(s) at \$17 per person

\_\_\_\_\_ Child(ren) at \$7 per child

\_\_\_\_\_ No charge for high school juniors and seniors  
(classes of 2025 or 2026)

Please consider a donation to the academic scholarship fund:

\_\_\_\_\_ \$25    \_\_\_\_\_ \$100    \_\_\_\_\_ \$50    \_\_\_\_\_ \$250

\_\_\_\_\_ Other amount

Donate to cover a student(s) meal:

\_\_\_\_\_ \$17    \_\_\_\_\_ \$34    \_\_\_\_\_ \$47    \_\_\_\_\_ \$64    \_\_\_\_\_ \$79

\_\_\_\_\_ TOTAL INCLUDED

### Please list attendee(s)

1. \_\_\_\_\_

2. \_\_\_\_\_

3. \_\_\_\_\_

4. \_\_\_\_\_



# FAVORITE FOODS CONTEST



SHOW OFF  
YOUR TABLE  
SETTING AND  
MENU  
PLANNING  
SKILLS

More Information, Contact Josie 785-229-3520 [josie03@ksu.edu](mailto:josie03@ksu.edu)

**WEDNESDAY | MAY 28<sup>TH</sup> | SET UP 9 AM | JUDGING 10 AM**

LOCATED AT FIRST BAPTIST CHURCH 410 S HICKORY ST, OTTAWA KS 66067

OPEN TO ALL ENROLLED FRANKLIN COUNTY 4-H YOUTH ENROLLED IN FOODS & NUTRITION. FACS JUDGING WILL ALSO BE AVAILABLE FROM 9 A.M.-12 P.M.

REGISTRATION IS DUE BY MAY 21ST. SCAN THE QR CODE OR VISIT  
[HTTPS://KSTATE.QUALTRICS.COM/JFE/FORM/SV\\_03TJHKEVK01B6LK](https://kstate.qualtrics.com/jfe/form/sv_03tjhkev01b6lk) TO  
REGISTER.

# Handy Links!

Please follow the links for more information

## **4-H Policy**

The current KSRE and 4-H practices cover the new requirements and are now included as a reference in the policy.

## **Electronic Treasurers Book**

An electronic version of the Treasurer's Book is available for any club or group to use. Located at the bottom of page on the club resource's page!

## **Helpful Resources**

Here are some resources to help guide you in projects, or any national curriculum that might be helpful!

## **Raffle Policy and Guidelines**

Any Extension unit-affiliated group (e.g. 4-H club, 4-H project group, etc.) wanting to conduct a raffle must first fill out and submit an application.

## **Frontier District Website**

This is our website that holds lots of great information!

## **Frontier District Facebook**

Follow us on Facebook for updated information!

## **Kansas 4-H Website**

This is the Kansas 4-H website and is an excellent resource. Information about state events, project materials and the state 4-H newsletter is available.

## **District Wide Project Leaders**

A list of District-wide projects and leaders is available to Frontier District 4-H members.

## **Disabilities Accommodations Request Form**

The Americans with Disabilities Act (ADA) requires persons with disabilities be provided "reasonable" accommodations and prohibits discrimination against persons with disabilities. Accommodations are generally considered reasonable if they don't change the fundamental nature of the program or alter the essential criteria for participation. Accommodations meeting these standards should typically be provided. Reasonable accommodations are determined through an interactive process between the community member and local and State 4-H Offices. It is essential for the Accommodation Request Form to be filled out FIRST at the local level in collaboration with a local Extension Professional to launch a formal accommodations process. Because it can take time to plan for accommodations, KSRE requests this form be submitted no later than two weeks prior to the event/activity. Submitting a request on shorter notice may reduce and/or limit any ability to implement accommodations.



# Meet the Staff

**Rebecca McFarland**

District Director  
Family and Community Wellness  
Agent  
Ottawa Office  
785-229-3520  
[rmcfarla@ksu.edu](mailto:rmcfarla@ksu.edu)

**Janae McNally**

District Agent  
Adult Development and Aging  
and Family Resource Management  
Lyndon Office  
785-828-4438  
[jmcnally@ksu.edu](mailto:jmcnally@ksu.edu)

**Ryan Schaub**

District Agent  
Crop Production and Farm  
Management  
Garnett Office  
785-448-6826  
[reschaub@ksu.edu](mailto:reschaub@ksu.edu)

**Rod Schaub**

District Agent  
Livestock Production  
Lyndon Office  
785-828-4438  
[rschaub@ksu.edu](mailto:rschaub@ksu.edu)

**Chelsea Richmond**

District Agent  
Nutrition, Food Safety and Health  
Garnett Office  
785-448-6826  
[crichmon@ksu.edu](mailto:crichmon@ksu.edu)

**Lauren Gammill**

District Agent  
Horticulture and Natural Resources  
Ottawa Office  
785-229-3520  
[laurengammill@ksu.edu](mailto:laurengammill@ksu.edu)

**Jessica Flory**

District Agent  
4-H Youth Development  
Ottawa Office  
785-229-3520  
[jrflory@ksu.edu](mailto:jrflory@ksu.edu)

**Jo Hetrick-Anstaett**

4-H Program Manager  
Lyndon Office  
785-828-4438  
[janstaett@ksu.edu](mailto:janstaett@ksu.edu)

**Josie Medlen**

4-H Program Manager  
Ottawa Office  
785-229-3520  
[josie03@ksu.edu](mailto:josie03@ksu.edu)

**Jeanette Stinebaugh**

4-H Program Manager  
Garnett Office  
785-448-6826  
[jlstineb@ksu.edu](mailto:jlstineb@ksu.edu)

**Kierstyn Blaufuss**

Office Professional  
Ottawa Office  
785-229-3520  
[kierstynb@ksu.edu](mailto:kierstynb@ksu.edu)

**Liz Drennan**

Office Professional  
Garnett Office  
785-448-6826  
[edrennan@ksu.edu](mailto:edrennan@ksu.edu)

**Anita Sobba**

Nutrition Educator - Kansas SNAP-ED  
Program  
Garnett Office  
785-448-6826  
[anitasobba@ksu.edu](mailto:anitasobba@ksu.edu)

**Kris Wallace**

Nutrition Educator - SNAP-ED  
Ottawa Office  
785-229-3520  
[krwall@ksu.edu](mailto:krwall@ksu.edu)

**Janaya Reed**

Financial Manager and Office  
Professional  
Lyndon Office  
785-828-4438  
[jlhamlin@ksu.edu](mailto:jlhamlin@ksu.edu)

**Carol Engle**

Communications & Marketing  
Manager  
Ottawa Office  
785-229-3520  
[carolengle@ksu.edu](mailto:carolengle@ksu.edu)