

# 4-H UPDATE

March 2025

Garnett Office  
411 S. Oak  
PO Box 423  
Garnett KS 66032-0423  
Phone: 785-448-6826  
FAX: 785.448.6153

Lyndon Office  
128 W. 15th  
PO Box 400  
Lyndon KS 66451  
Phone: 785-828-4438  
FAX: 785.828.3427

Ottawa Office  
1418 S. Main,  
Suite 2  
Ottawa KS 66067  
Phone: 785-229-3520  
FAX: 785.229.3527

## GREAT THINGS HAPPENING....

Delegates at Citizenship In Action (CIA) spent the day at the Kansas State Capitol meeting with legislators, attending tours, and conversing with new friends. Youth came across Kansas together to understand the legislative process and what it takes to be a leaser in their own communities. We had several youth attend from the district, Blaine King, L13; Calla Higbie, ATB; Anah Higbie, ATB; Mara Drieling, SH; Reagan Craig, NO; Jaiton Bosse, WW; Korbin Reeves, WW; Avery Thielen, WW; Kevin Whitmer; WW, Brody Thompson; WW. These kids are countinuously growing their knowledge and expanding through 4-H! Reach out for more information about how to attend next year!



## National Agriculture Month

Agriculture is Kansas' largest industry and March has been proclaimed Kansas Agriculture Month. Additionally, **March 19, 2024** has been declared Kansas Agriculture Day. Follow the link to learn more about how to celebrate!

## AT A GLANCE

- [Calendar](#)
- [CIA Photos](#)
- [Club Day Photos](#)
- [Enrollment](#)
- [Setting Project Goals](#)
- [Kansas Clover Classroom](#)
- [Rock Springs Camp](#)
- [Walk Kansas](#)
- [Scholarships](#)
- [Entomology](#)
- [Horse Project Updates](#)
- [District Clubs](#)
- [Day Camp](#)
- [Anderson Activities](#)
- [Osage Opportunities](#)
- [Franklin Festivities](#)
- [Meet the Staff](#)

## OFFICES CLOSED

- May 26th
- June 19th
- July 4th

# 4-H Calendar

## MARCH

**Mar. 1** Jr. Swine Producer Day  
**Mar. 1** 4-H State Scholarships Due  
**Mar. 2** FR CO. Beef Weigh-In  
**Mar. 3** Blue & Gold Due  
**Week of Mar. 17** Blue & Gold Delivered  
**Mar. 21** AN CO. Scholarships Due  
**Mar. 21** OS STEM Day Camp  
**Mar. 22** Jr. Meat Goat Producer Day  
**Mar. 26** OS CO. Beef Weigh-In  
**Mar. 30** AN CO. Beef Weigh-In

## APRIL

**Apr. 20** Last Day to Order Market Beef DNA Envelopes for Nominations  
**Apr. 23** FR CO. Small Animal Weigh-In

## MAY

**May 1.** Market Beef Nominations Due  
**May 6** OS CO. Small Animal Weigh-In  
**May 7** AN CO. Small Animal Weigh-In

## JUNE

**June 5** Last Day to Order Small Animal DNA Envelopes for Nominations  
**June 15** Small Animal Nominations Due

## JULY

**July 10-12** Richmond Free Fair  
**July 14-19** Franklin County Fair  
**July 16-19** Osage City Fair  
**July 28-Aug 1** Anderson County Fair

## AUGUST

**Aug. 5-8** Overbrook Fair

## SEPTEMBER

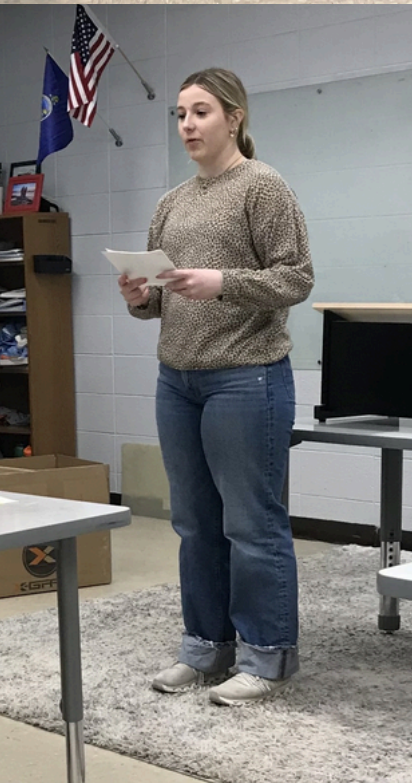
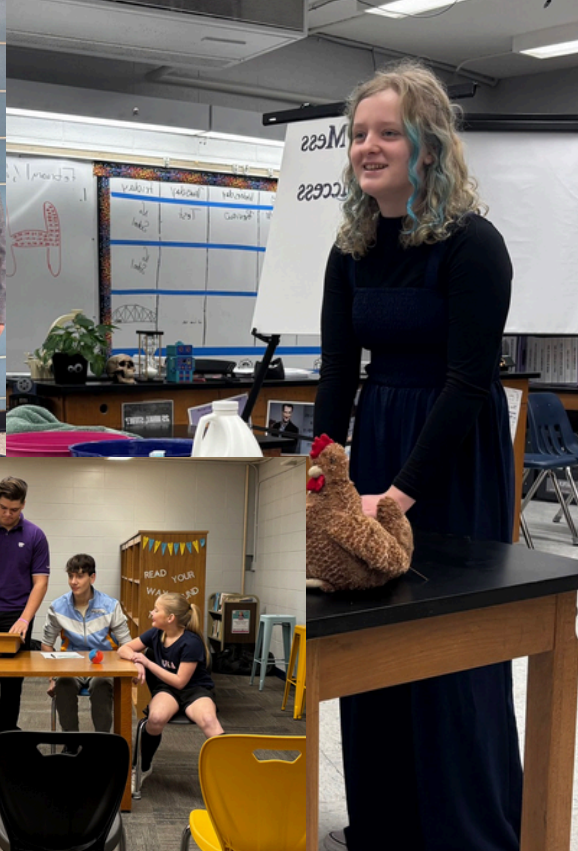
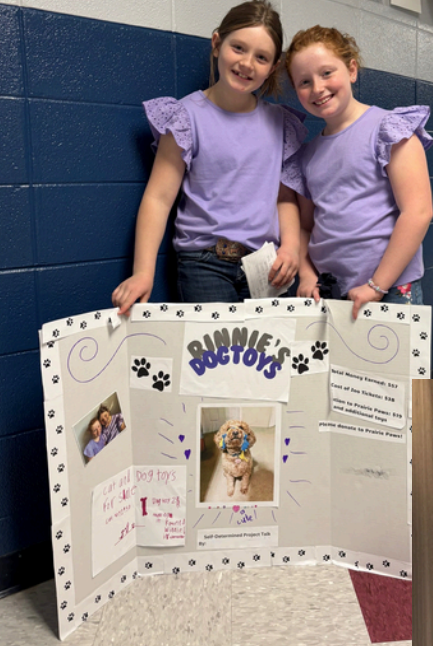
**Sept. 5-19** Kansas State Fair













# District Details

## Leaders have you...

### Review

- Turned in your organization Reports and Financial Reviews?
- Re-enrolled?
- Looked over deadlines & dates?
- Promoted enrollment
- Checked Volunteer enrollment
- Encouraged 4-H members to ask a friend to attend meetings
- Encouraged current 4-H members to review and complete applications for Citizenship in Action
- Reminded all 4-H members and parents who are volunteers to enroll via 4-H Online
- Provided officers and clubs leadership updates as soon as possible to the Extension Office

### To-Do

- Check mailbox at the Extension Office
- Report from 4-H Council Meetings
- Update Volunteer Renewal information
- Organizational Report



### Animal Science Newsletter

Did you know that there is a monthly newsletter written by the KSU Animal Science Department. Be sure to check it out, as they write important topics, such as camps coming up, upcoming events, topics you might need to know in the barn. Check out the link above to find information you might need to know!



### Setting Project Goals

After choosing projects, it is important to plan what can be learned and accomplished. What new skills can be gained? Who is going to help along the way? Setting measurable goals will help guide youth through positive 4-H project learning experiences. This resource can help members get started!



### Kansas Clover Classroom

The Kansas Clover Classroom is an amazing 4-H project supplemental guide available to 4-H families. Taking photos, designing a cabinet, building rockets, collecting insects, tending to livestock...those activities are part of a much bigger, project-based learning process to prepare youth for the future. Which challenge will you take on?



### Rock Springs Camp 2025

Summer Camp 2025 registration open! There are eight different traditional 4-H camp dates in June and July. We recommend **Session two!** There are also three CIT dates in June and July and two LIT dates in June. They have also added a two night mini camp for rising 1st-3rd graders, as well as a Specialty camp for rising 6th-9th graders. Transportation schedules are being finalized. Check out which date and/or camp works best for you! Camperships (scholarships) are available for all levels!



### Entomology Meeting

Come join the fun and learn about making great visual displays. **Saturday, March 8th** at the Allen County Extension Office Meeting Room beginning at 1:00 p.m. It's not too early to start on displays for the County Fair! Learn time saving tips for making posters and tri-folds. Learn about making your displays stand out. This is open to all 4-H families. Please RSVP at [vicky.wallace55@gmail.com](mailto:vicky.wallace55@gmail.com) or (620)804-9170.



# District Details

## Members have you... Checked off

- Re-Enrolling in 4-H?
- Asked a friend to join
- Signed Up to Present at a Club Meeting?
- Set Project Goals?
- RSVPed for Leadership Event

## Review

- 4-H members: ask a friend to attend meetings
- Encourage current 4-H members to review and complete applications for Citizenship in Action
- Remind all 4-H members and parents who are volunteers to enroll via 4-H Online
- Provide officers and clubs leadership updates as soon as possible to the Extension Office



### Distict Club Days

We hosted District Club Day on February 22nd at Central Heights. Overall we had 50 kids participate in different ways. Results from District Club Day have been posted. Great job to everyone who participated, we had a great weekend, and loved seeing everyone's talents. Be sure to check out the photos on FaceBook!



### Regional Club Days

Regional Club Day will be **March 29th** at Shawnee Heights High School at 2410 SE Burton St, Topeka, KS 66605. A link for sign up will be sent to those eligible to participate. Be sure to review the guidelines! The Communication Fact Sheets and score sheets are also helpful resources. As well, be on the look out for room monitor sign ups! Be sure to support your friends at Regionals.



### Walk Kansas

Walk Kansas is a team-based program that helps participants lead a healthier life, be more active with friends and family, make better nutrition choices and walk away stress. Walk Kansas dates are **March 30 - May 24, 2025**.



### Rock Springs Ranch Open House

Rock Spring Ranch is offering an Open House on **April 13th** from 1:00 p.m. - 4:00 p.m. This is a great opportunity to explore the camp if you are interested in attending. Even if you have attended, come on out & bring the whole family, and see what has changed since you last went!



### Add/Drop Deadline

The Extension Office will need to be contacted to have information changed. Any adding or dropping of projects must be done by **May 1st** in order for the member to enter in the 4-H divisions of the Fair. Direct all questions to the Extension Office.



# District Details

## Member/Volunteer Enrollment

The new 4-H year began **October 1st**, so it is time for new and returning 4-H members and volunteers to enroll. All returning 4-H members and volunteers should be re-enrolled by December 1st. Projects and/or clubs will need to be added when enrolling. Project years should auto-populate, if not, please call the office. Families are also encouraged to confirm the email address and phone numbers for the family and for each member or volunteer. Direct any questions or concerns to the Extension Office.

- [Click here to enroll](#)
- Create an account
- Select your participation type
- Choose your county & club
- Select your projects (remember, once you have enrolled, if you need to add more, message your Extension Office.)
- Review consent forms, there are more this year!
- Enter member information
- Click submit!



## Horse Project Updates

The [Kansas 4-H Horse ID Certificate \(P1039\)](#) has been updated for the 2025 4-H program year. Beginning with the 2025 4-H program year, please use the new form and destroy previously used 4-H Horse ID Certificates. As a reminder, to properly identify your horse, complete the 4-H Horse ID Certificate, have your Extension Agent sign it and copy it. A COPY of the Horse ID Certificate is kept on file in the Extension Office and the 4-H Horse member maintains the ORIGINAL certificate. The original certificate is presented by the 4-H member to show staff for check-in at the local 4-H horse shows. Beginning in 2025, registration papers WILL NOT be accepted to identify horses for the 4-H Horse project. An [example of the Horse ID Certificate](#) is available online



## Important Livestock Dates

Check out the Youth Livestock Program Newsletter or “like” the Kansas State Youth Livestock Program on Facebook!

**4/20/25:** Last day to order Market Beef DNA Envelopes for Nominations

**5/1/25:** Market Beef Nominations Due for KSF & KJLS

**6/5/25:** Last day to order Small Animal Livestock DNA Envelopes for nominations

**6/15/25:** Commercial Heifer, ALL Swine, ALL Sheep and ALL Meat Goat Nominations Due for KSF & KJLS.

**9/5-14/25:** Kansas State Fair

**10/3-5/25:** Kansas Jr. Livestock Show



## KSF & KJLS Information

Families planning to participate in the Kansas State Fair Grand Drive or the Kansas Junior Livestock Show will need to Order DNA envelopes. Families will purchase envelopes directly through ShoWorks for each animal to be nominated. The cost will be \$12/animal.

1) DNA envelope orders will close **April 20th** for market beef and June 5th for small livestock. Families must get envelopes ordered early! DO NOT WAIT!

2) Market Beef Nominations due **May 1st**. Commercial Heifer, ALL Swine, ALL Sheep and ALL Meat Goat Nominations are due **June 15th**.

3) NOTE: ENTRY IS ONLINE ONLY!



# YQCA

**YOUTH** FOR THE  
**QUALITY CARE**  
**ANIMALS**

**FRANKLIN COUNTY**

**FAIRGROUNDS**

17TH AND ELM STREET IN OTTAWA, KS

**MARCH 19 9:00 AM-3:00 PM**

**TENTATIVE SCHEDULE**

**9:00 ANIMAL WELL-BEING**

**10:00 GROOMING CLINIC**

**11:00 AM FOOD SAFETY**

**NOON LUNCH**

**1:00 LIFE SKILLS**

**2:00 SHOWMANSHIP CLINIC**

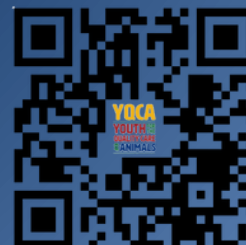
**ALL 4-H MEMBERS WELCOME**

**NOTE: SIGN UP FOR THE CAMP AND  
FOR THE TRAINING UNDER YQCA**

**\$3 - YQCA/ \$7-CAMP LUNCH**



**DAY CAMP SIGN-UP**



**INFORMATION YQCA**



**YQCA SIGN-UP**



**K-STATE**  
Research and Extension



Frontier  
District



*New Class*

# SHOPPING IN STYLE

**DAY CAMP**

GARNETT COMMUNITY BUILDING

MARCH 20

1:00- 3:00 PM

GUEST SPEAKER: CASSIDY COLLINS

ALL 4-H MEMBERS WELCOMED

30 SPOTS AVAILABLE

SIGN UP ON FRONTIER DISTRICT



**K-STATE**  
Research and Extension



Frontier  
District



# STEAM DAY CAMP

MARCH 21

LYNDON COMMUNITY BUILDING

9:00 AM– 3:00 PM

OPEN TO 4-H MEMBERS IN

2ND GRADE– 5TH GRADE

20 SPOTS AVAILABLE/ \$5 FOR LUNCH

SIGN UP ON FRONTIER DISTRICT

\_DRONES  
\_CODING

**K-STATE**  
Research and Extension



Frontier  
District



# JOIN US!

Summer 2024

## FEEDING YOUR FUTURE

### *Agriculture Camp*

High school students, sophomores to seniors, will attend a 4-day agriculture immersion camp featuring the Departments of **Grain Science** and **Agronomy** at Kansas State University.

<https://www.ag.k-state.edu/ag-experiences/summer-camps/>

**July 16-20, 2024**

**AGRONOMY**

**MILLING SCIENCE**

**BAKERY SCIENCE**

**FEED AND PET FOOD SCIENCE**

**FOR MORE INFORMATION:**

Deana Core, Assistant Dean, 785-532-6151, [dcore@ksu.edu](mailto:dcore@ksu.edu)

**KANSAS STATE**  
UNIVERSITY | College of Agriculture



# INSECT ART CONTEST

## 2025

*By the Light of the Moon: Insects at Night*



The K-State Research and Extension Pesticide Safety and IPM Program is hosting its annual insect-themed art contest, open to all ages and skill levels in Kansas. This year, the theme is "*By the Light of the Moon: Insects at Night*." The goal is to explore which insects are active or inactive at night and why, then create artwork that fits the contest theme.

### AGE GROUPS

- Kindergarten - 2nd
- Grade 3rd Grade - 5th
- Grade 6th Grade - 8th
- Grade High School
- Adults

### CATEGORIES

- Traditional Illustration (drawing or painting)
- Digital Artwork
- 3-D Creation (painting on canvas, collage, sculpture, or other media)

### AWARDS

Certificates and prizes will be awarded for each art category in each age group for 1st through 3rd place.

## HOW TO ENTER



Submit your entry by April 15, 2025. See full rules and details by visiting <https://www.ksre.k-state.edu/pesticides-ipm> or by scanning the QR code.

**K-STATE**  
Research and Extension

Integrated Pest Management  
and Pesticide Safety Education

Kansas State University Agricultural Experiment Station and Cooperative Extension Service K-State Research and Extension is an equal opportunity provider and employer. Issued in furtherance of Cooperative Extension Work, Acts of May 8 and June 30, 1914, as amended. Kansas State University, County Extension Councils, Extension Districts, and United States Department of Agriculture Cooperating, Ernie Minton, Director.





**K-STATE**  
Research and Extension

# 2025 K-State Junior Swine Producer Day



Join us on Saturday, March 1, 2025 for the biennial K-State Junior Swine Producer Day at the Stanley Stout Center in Manhattan. This educational event will be a fun-filled day in which youth, parents, agents, ag teachers, and swine project leaders can increase their knowledge of youth swine projects. Presentations will be provided by K-State faculty members, graduate students, former exhibitors, and guest speakers. All ages and skill levels are invited! Participants will receive a K-State Show Pig Guide, t-shirt, and complimentary lunch. Only those who register by February 5 will receive a t-shirt. The registration fee is \$20/person for those who sign up by the registration deadline, or \$25/person after that date. Registration is limited to 400 attendees, on a first come, first served basis. This is a family event! Anyone attending must register, including all youth and adults.

## March 1



### Tentative Schedule



### Registration



### Questions?

8:00AM Registration Opens  
9:00AM Welcome  
9:15AM Project Selection  
10:00AM Breakout Sessions  
-Nutrition, Meats, Facilities & Equipment, Breeds & Ear Notching  
12:00PM Lunch  
12:45PM Health  
1:30PM Breakout Sessions  
-Showmanship, Daily Care & Clipping, Show Day Prep, Resources  
3:00PM Wrap-up  
3:30PM YQCA Training (optional)

- ✓ \$20/person by February 5
- ✓ \$25/person after February 5
- ✓ Late registrants will not receive a t-shirt.
- ✓ All attendees must register, including youth, parents, and adults.
- ✓ No refunds.
- ✓ Attendance is limited to the first 400 participants to register.

Joel DeRouchey  
jderouch@ksu.edu  
785.532.2280

Lexie Hayes  
adhayes@ksu.edu  
785.532.1264

## Register By February 5

*\*Limited Attendance\**

 **Location**  
Stanley Stout Center

 **Register Online**  
<https://commerce.cashnet.com/KSUASIND>

K-State, County Extension Councils, Extension Districts, and U.S. Department of Agriculture Cooperating. All educational programs and materials available without discrimination on the basis of race, color, religion, national origin, sex, age, or disability.

K-State Research and Extension and the Department of Animal Sciences & Industry, or their assignees, reserve the right to photograph, record the image and/or voice of participants for future research, educational, or promotional purposes. By attending, you provide consent to the above items and waive all rights to claims for payment or royalties in connection with any use of said images or recordings, unless you notify event organizers you withhold consent, in writing, prior to the event.



Scan Me!



# K-State Junior

# 3.22.25

## Event

Join us on Saturday, March 22, 2025 for the biennial K-State Junior Meat Goat Producer Day at the Stanley Stout Center north of the K-State campus in Manhattan. This educational program will be a fun-filled day in which youth, parents, agents, ag teachers, project leaders, and volunteers can increase their knowledge of youth meat goat projects. Presentations will be provided by K-State faculty members, graduate students, former exhibitors, and guest speakers. All ages and skill levels are invited! Participants will receive a K-State Meat Goat Show Guide, t-shirt, and complimentary lunch. Only those who register by the deadline on February 26 will receive a t-shirt. The registration fee is \$20/person before February 26 and \$25/person after the deadline. This is a family event! Anyone attending must register, including all youth, parents, and adults. Registration is **limited to 400** participants, filled on a first come, first serve basis.

## Tentative Program

Friday, March 21  
5:00-7:00PM *Optional Tour*  
Sheep & Meat Goat Center  
Saturday, March 22  
8:00AM Check-in  
9:00AM Welcome  
9:15AM Selection  
10:00AM Breakout Sessions

- Nutrition
- Facilities & Equipment
- Doe Management & Kidding

11:15AM Health & Wellness  
12:00PM Lunch  
1:00PM Breakout Sessions

- Showmanship
- Reproduction
- Clipping & Grooming

3:15PM Wrap-up  
3:30PM YQCA Training (*optional*)  
4:00-6:00PM *Optional Tour*  
Sheep & Meat Goat Center

K-State, County Extension Councils, Extension Districts, and U.S. Department of Agriculture Cooperating. All educational programs and materials available without discrimination on the basis of race, color, religion, national origin, sex, age, or disability.

## Registration

- \$20/person by February 26
- \$25/person after February 26
- Late registrants will not receive a t-shirt.
- All attendees must register, including youth, parents, & adults.
- No refunds
- Attendance is limited to the first 400 participants to register.



Scan me!

## Questions?

Lexie Hayes  
adhayes@ksu.edu  
785.532.1264

## Register Online

<https://commerce.cashnet.com/KSUASIND>

By

February 26

Highly pathogenic avian influenza, or HPAI, is a rapidly spreading viral disease that can infect many types of birds. Avian influenza, often called avian flu or bird flu, can be common, but some strains are highly pathogenic, which means they are more deadly. Introduced by migrating wild birds, HPAI can spread through spring migration and affect all domestic poultry — small and backyard flocks as well as commercial industries.

Poultry with HPAI do not survive the illness. Vaccines for HPAI are not readily available.

### Signs of Avian Influenza

- Coughing and sneezing
- Difficulty breathing
- Extreme depression
- Lack of energy
- Decrease in feed or water intake
- Swelling or purple discoloration of head, eyelids, comb, wattle and legs
- Decrease in egg production
- Sudden unexplained death

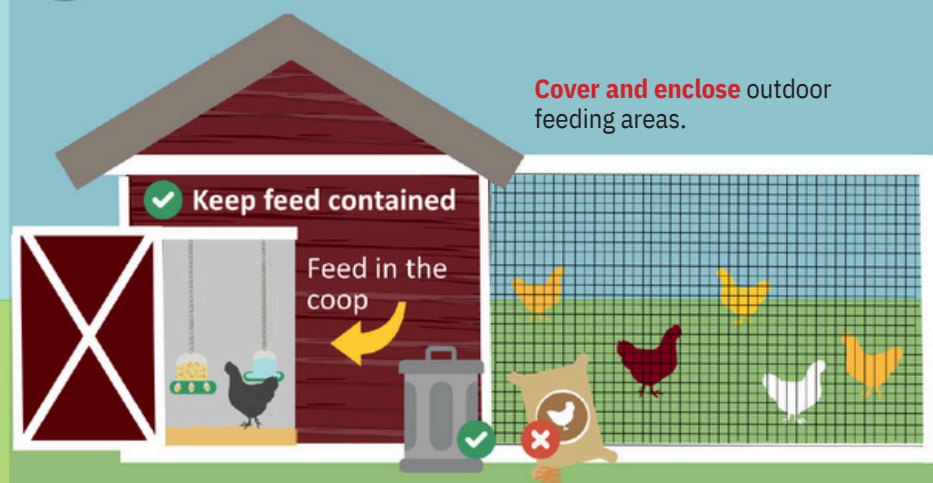
Biosecurity is your best option to prevent HPAI from entering your small or backyard poultry flock.

### Here is what you can do:

## Protect Your Small Flock from Avian Influenza

1

**Avoid** attracting wild birds and waterfowl to your home or farm. Song birds, sparrows, starlings, etc. are **low risk**.



- Clean up** feed spills.
- Reduce** puddles and standing water.
- Avoid** visiting ponds and streams, especially with pets.
- Do not** move birds from farm to farm.
- Isolate** new birds.



2

**Limit** or **halt** travel with your birds to sales, shows and swaps. Ensure you have clean hands, clothes, and footwear before handling your birds if you attend events. **Do not** allow others to handle your birds.



3

**Limit** your birds' visitors. If someone must visit your birds: discuss where they have been. Have them wash their hands and wear clean clothes and footwear.



Call your veterinarian if your flock shows signs of influenza or you suspect exposure. No veterinarian? Call the Kansas Department of Agriculture's Division of Animal Health at 785-564-6601.





# KANSAS 4-H HORSE PANORAMA

## SAVE THE DATE!!

### FEBRUARY 22-23, 2025 ROCK SPRINGS

Save the date! Registration  
information coming soon!!!



Kansas State University Agricultural Experiment Station and Cooperative Extension Service.  
K-State Research and Extension is an equal opportunity provider and employer.

**K-STATE**  
Research and Extension



When: February 22-23, 2025

[DRAFT Schedule](#)

[Register Here](#)

[Hippology, Horse Bowl, Presentation Rules](#)

[Virtual Rules](#)

Registration includes housing and meals at Rock Springs as well as contest fees. Everyone who attends MUST register. All youth must have an adult chaperone.

Cost:

Youth Participant- Full time \$155 (February 22-23)

Youth Participant with Friday check-in \$185.00

Youth Participant Saturday only \$130

Adult Full-time \$130

Adult with Friday check-in \$170

Virtual \$0

Where: Rock Springs

Who: 4-H Members ages 9-18 and adult volunteers. Horse Panorama is a compilation of various contests related to the Horse Project. Contests include: quiz bowl, hippology, public speaking presentations, photography and educational posters.

# Anderson Activities

## County Council Committees

National 4-H Week	All Clubs
Achievement Night Celebration	Lucky 13
County Wide Fun Event	Star Shooting
County Wide Community Service	Cherry Mound
Club Days	Lucky 13
Recognition of 4-H Seniors	Cherry Mound
District Wide Day Camp	Star Shooting
New Member Event	All Clubs
After Fair Pool Party Treats	Seekers Not Slackers
District Activity	Seekers Not Slackers



## 4-H Council Meeting

Our next meeting will be **March 10, 2025 at 7:00 p.m. in the Extension Office Meeting Room.** Be sure to attend and represent your club as there must be a leader and youth representative from each club at every meeting in order for the club to be on track to receive a purple seal at year's end.



## Animal Weigh-In and Tagging Dates

Beef: **March 30, 2025, 2-4 p.m. at Garnett weigh station on 7th Street**

Small Animal: **May 7, 2025, 5-7 p.m. at the fair grounds**

**Note:** Per Fair board rules, all tagging for county fair must be done prior to or at weigh-in only. If missed, the animal will be ineligible to be shown at the Anderson County Fair.



## Blue & Gold Fundraiser

We are selling Blue and Gold Meats (bacon, sausage and chicken strips) as a fundraiser again this year. **All orders and money is due to the Extension Office by March 3, 2025.** Delivery is expected the week of March 17, 2025. The exact date will be announced closer to that time.



## Communication

Please review your upcoming schedule for any potential conflicts with any of our scheduled events. Should you identify any, kindly reach out to the office as soon as possible so we can work together to find a suitable solution. We are more than happy to assist, but we kindly request ample advance notice to coordinate the necessary arrangements. Thank you for your understanding.



## Quilting Opportunities

We have 3 upcoming sewing and quilting opportunities. They are on March 1, March 8, and March 20th. The first two dates will be to sew together the quilt blocks that were entered in the fair last year for the Quilt Block Challenge. The third date will be to design and make a quilt block to be entered in this year's Quilt Block Challenge at the fair. For details, see the flyers below.



## Kansas Youth Range Camp

Upcoming High School Sophomores, Juniors, & Seniors are invited to attend the Kansas Youth Range Camp in June. See the flyer on the next page. The Anderson County Conservation District will provide 1 scholarship to an Anderson County 4-H member that is interested in attending. Contact 785-448-6323 ext. 101 for application details.



Join us for a...

# Quilting Bee!

Saturday, March 1

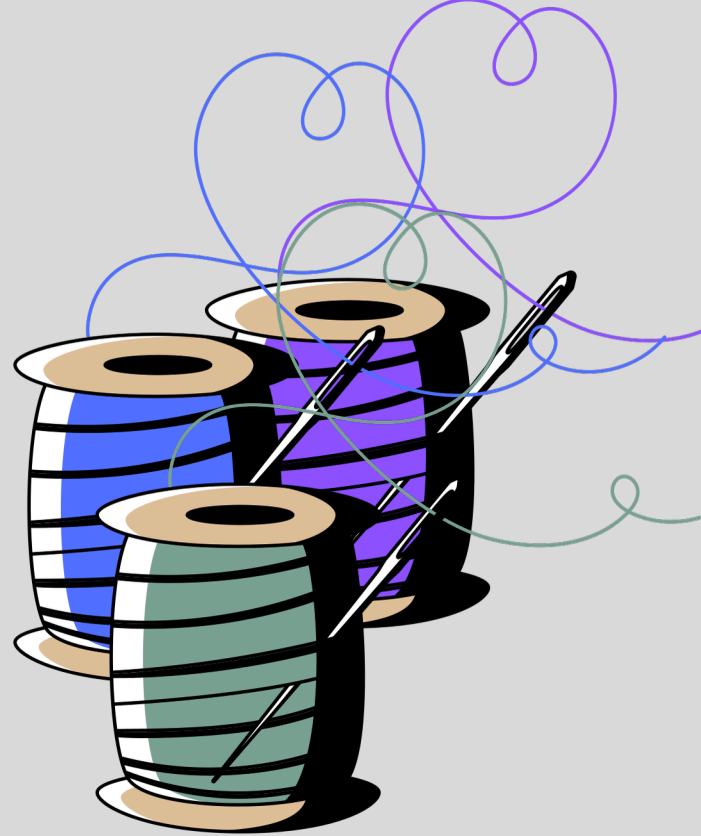
Saturday, March 8

9 am to noon each day

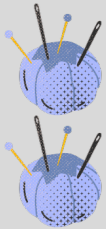
Come for one day or both!

*Frontier Extension District Garnett Office*

411 S. Oak



***Looking for Youth (4-H and non 4-H) and Parents  
to help prepare the quilt top for the  
Anderson County 4-H Scholarship Fund quilt raffle  
held at the Anderson County Fair***

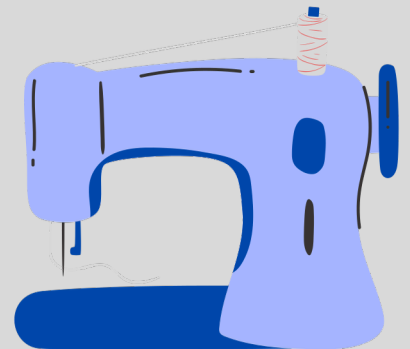


Youth should be 7 years of age or older

Bring a sewing machine if they have one

***When the top is prepared,  
the quilt will be sent to the quilter!***

**For more information, contact Jeanette Stinebaugh at  
[jlstineb@ksu.edu](mailto:jlstineb@ksu.edu) or 785-448-6826**



**K-STATE**  
Research and Extension

Frontier  
District

**Kansas State University Agricultural Experiment Station and Cooperative  
Extension Service**

*K-State Research and Extension is an equal opportunity provider and  
employer.*

# Quilt Block Challenge!

Thursday, March 20

9 am to noon

Frontier Extension Garnett Office

411 S. Oak

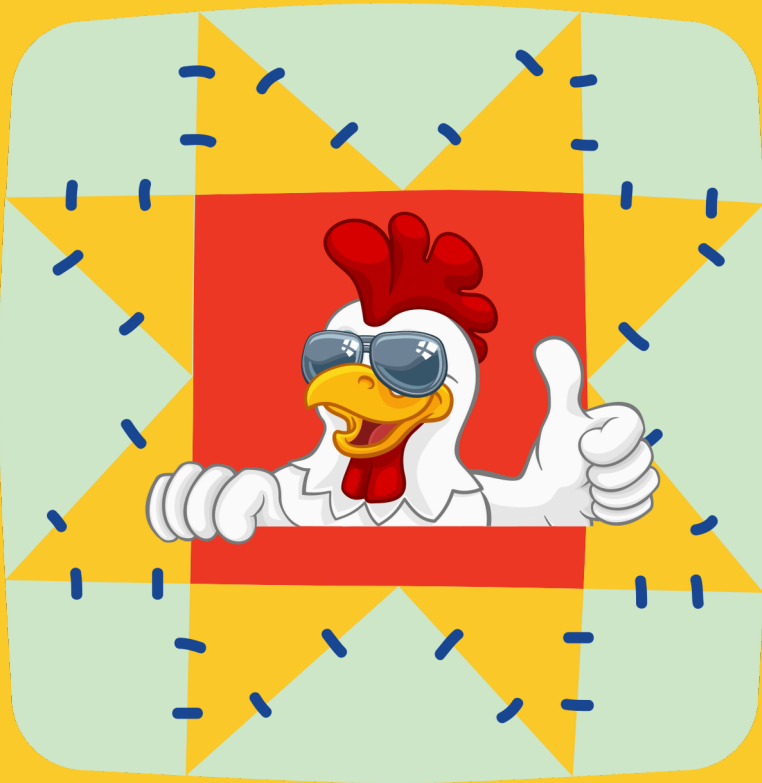
All youth 7 years and older:

4-H or non 4-H

**Register by calling the**

**Garnett office**

**785-448-6826**



Learn to make a quilt block based  
on this year's Fair theme:

***The Anderson County Fair:  
Something to Crow About***

Purchase a quilt block packet for \$3.00 cash at Country Fabrics in  
Garnett, and bring 1 or 2 additional pre-washed cotton fabrics to  
coordinate with the challenge fabrics.

Blocks will be entered in the 2025 Fair and kept by the Quilt Guild  
after the fair; the blocks will later be made into a quilt  
that is raffled to support the  
Anderson County 4-H Scholarship!



**Class taught by members of Pieces and Patches Quilt Guild**



**K-STATE**  
Research and Extension

Frontier  
District

**Kansas State University Agricultural Experiment Station and Cooperative Extension Service**

*K-State Research and Extension is an equal opportunity provider and employer.*



Are YOU interested in plants, livestock or wildlife?

# KANSAS YOUTH RANGE CAMP

White Memorial Camp, Council Grove, KS

Upcoming High School Sophomores, Juniors, & Seniors

Learn about range plant identification, plant growth, stocking rates, livestock nutrition, and rangeland wildlife management

Enjoy field trips, hands on learning, a steak dinner, swimming, fishing, and hiking!

June 10-13, 2025

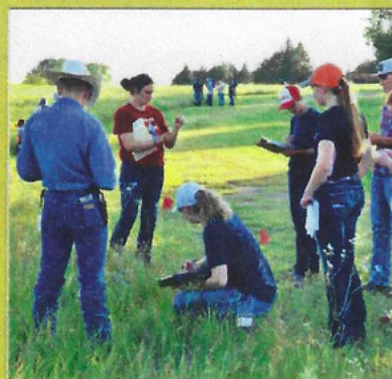
COST: \$300

Contact your local Conservation District for scholarship opportunities!

Call 785-448-6323 ext. 101 to get application



Educating Kansas



Youth for

REGISTER NOW



Over 60 years!

Sponsored by:  
Kansas Section,  
Society for Range  
Management



Contact:  
Courtney Jackson  
KS Youth Range Camp Chair  
620-767-5111 ext. 3  
[courtney.jackson@usda.gov](mailto:courtney.jackson@usda.gov)



**MEMBERS: DON'T FORGET TO BE SELLING!**



# Go for the Gold

We're selling Blue & Gold Sausage, Bacon and Chicken Tenders to raise money for:

## **Anderson County 4-H**

**CONTACT:** Anderson County Extension Office 785-448-6826

**SALE DATES:** January 1-March 2

**ORDERS & MONEY** March 3

**DUE BY:**

Thanks for  
your support!



Make checks  
payable to  
**Anderson County  
4-H Council**

[www.blueandgoldsausage.com](http://www.blueandgoldsausage.com)



# Osage Opportunities

## County Council

April 28th @ 7 p.m.

Leader's Meeting @ 6:30 p.m.

Lyndon Extension Office

County Wide Fundraiser	MJH
Club Day	NO
Achievement Night Celebration	WW
District Wide Day Camp	Ambassadors
Council By-laws & National 4-H Week	BG
District Wide Event	LL

## Save The Date:

### Osage City Fair:

July 16-19, 2025

### Overbrook Fair:

August 5-8

### Blue & Gold:

Due March 3rd, Delivered week of March 17th



## Shooting Sports Schedule

Shotgun Schedule:

Sundays 3pm at 15303 S Osage Rd, Burlingame

March 30th

April 6, 13 and 27th

Members must be eight years old by January 1st, to participate. Some disciplines have other age restrictions. Shooters **MUST** attend the first date of discipline for safety training, review of 4-H code of conduct and to complete all paperwork. Direct any questions to Marcie at 785-640-2270 or [mkquaney@gmail.com](mailto:mkquaney@gmail.com).



## Spring Tagging and Weigh In

Beef: **March 26th, 2025**; 4-6 p.m. at the Osage City Fairgrounds. This will include all cattle (breeding, market and bucket calf). Bucket calves may be tagged at either tagging date.

Small Animal: **May 6th, 2025**, 4-6 p.m. at the Osage City Fairgrounds. Small animals include: bucket calf, and market and breeding swine, sheep and goat.

Youth enrolled in Breeding beef, Dairy, Market and Breeding Meat Goat, Sheep, and Swine must own and have possession of animals by **May 15th**.

Youth enrolled in the Rabbit and Poultry project must own/have possession of animals by **June 15th**.

A bucket calf must have been born **Jan. 1st-May 1st** of the current 4-H year.



## Scholarships

Osage County Farm Bureau due April 1st

Ottawa COOP due April 1st

# Franklin Festivities

## County Council

March 31, 7:00 p.m. @

Commission Chambers, 1418 S.  
Main, in Ottawa (down the hall  
from the Extension Office)

Club Day	RR
District Wide Day Camp	BGG & AR
Livestock Buyer Appreciation	SH
National 4-H Week Marketing	FOP & SS
Achievement Night Celebrations	RW
District Wide Event	PGB
Community Service & Fair Goody Plates	AT

## Save the Date

Franklin County Fair;  
**July 14-19, 2025**

## Livestock Weigh-In & Tagging

Beef: **March 2nd, 2025**; 4-6 p.m. at Cottonwood Animal Hospital, 3161 K-68, in Ottawa. We will only have EID Tags this year.

Small Animal - **April 23th, 2025**; 4:00-6:00 p.m. at the Fair grounds, 220 W. 17th, in Ottawa. Small animal includes Swine, Sheep, and Goat. We will only be using EID Tags.

This year we only will be using **EID tags for all animals**. They will cost \$3.00 a tag, and you must pay for tags at weigh in. There will no longer be invoices, so please have exact change or check available at weigh-in.

## Scholarships

Franklin County Farm Bureau - **April 1st, 2025**

Ottawa Co-op - **April 1st, 2025**

Kansas 4-H - **March 1st, 2025**

## Franklin County Fair Updates

Our team, including members from Extension, the Fair Board, and Superintendents, has been actively discussing some rule changes aimed at enhancing our fair experience and aligning closely with State Fair guidelines. Please read the letter attached. For any questions please contact the office.

## Save the Date

Save the date for **March 19th** for a day spent learning about grooming, character, leadership, and a YQCA training. this will be held at the Franklin County Fair Grounds. Be on the look out for more information!

## Shooting Sports Practice

Franklin County Shooting Sports will only offer archery for the upcoming year. Practices will begin sometime this April. **They are looking for other discipline leaders!** Practice dates will be listed when available and will also be sent to those who are enrolled in the project. Direct any and all questions to Becky Cain at [FranklinCountyShootingSports@gmail.com](mailto:FranklinCountyShootingSports@gmail.com) as she is the current program coordinator.





Now Accepting  
*Scholarship Applications*

Four \$500 Scholarships Available  
[www.franklinfb.org](http://www.franklinfb.org)



FRANKLIN COUNTY FARM BUREAU®  
The Voice of Agriculture®





FRANKLIN COUNTY FARM BUREAU®  
The Voice of Agriculture®

*Ag Ambassadors*

FOUR \$500 SCHOLARSHIPS AVAILABLE  
FOR CURRENT SENIORS  
APPLICATIONS DUE MARCH 31

TWO \$1000 SCHOLARSHIPS AVAILABLE  
FOR CURRENT JUNIORS  
APPLICATIONS DUE MAY 5

*Apply TODAY*

785.242.4130 | [FRANKLINFB@KFB.ORG](mailto:FRANKLINFB@KFB.ORG)



# Handy Links!

Please follow the links for more information

## **4-H Policy**

The current KSRE and 4-H practices cover the new requirements and are now included as a reference in the policy.

## **Electronic Treasurers Book**

An electronic version of the Treasurer's Book is available for any club or group to use. Located at the bottom of page on the club resource's page!

## **Helpful Resources**

Here are some resources to help guide you in projects, or any national curriculum that might be helpful!

## **Raffle Policy and Guidelines**

Any Extension unit-affiliated group (e.g. 4-H club, 4-H project group, etc.) wanting to conduct a raffle must first fill out and submit an application.

## **Frontier District Website**

This is our website that holds lots of great information!

## **Frontier District Facebook**

Follow us on Facebook for updated information!

## **Kansas 4-H Website**

This is the Kansas 4-H website and is an excellent resource. Information about state events, project materials and the state 4-H newsletter is available.

## **District Wide Project Leaders**

A list of District-wide projects and leaders is available to Frontier District 4-H members.

## **Disabilities Accommodations Request Form**

The Americans with Disabilities Act (ADA) requires persons with disabilities be provided "reasonable" accommodations and prohibits discrimination against persons with disabilities. Accommodations are generally considered reasonable if they don't change the fundamental nature of the program or alter the essential criteria for participation. Accommodations meeting these standards should typically be provided. Reasonable accommodations are determined through an interactive process between the community member and local and State 4-H Offices. It is essential for the Accommodation Request Form to be filled out FIRST at the local level in collaboration with a local Extension Professional to launch a formal accommodations process. Because it can take time to plan for accommodations, KSRE requests this form be submitted no later than two weeks prior to the event/activity. Submitting a request on shorter notice may reduce and/or limit any ability to implement accommodations.





# Meet the Staff

**Rebecca McFarland**

District Director  
Family and Community Wellness  
Agent  
Ottawa Office  
785-229-3520  
[rmcfarla@ksu.edu](mailto:rmcfarla@ksu.edu)

**Janae McNally**

District Agent  
Adult Development and Aging  
and Family Resource Management  
Lyndon Office  
785-828-4438  
[jmcnally@ksu.edu](mailto:jmcnally@ksu.edu)

**Ryan Schaub**

District Agent  
Crop Production and Farm  
Management  
Garnett Office  
785-448-6826  
[reschaub@ksu.edu](mailto:reschaub@ksu.edu)

**Rod Schaub**

District Agent  
Livestock Production  
Lyndon Office  
785-828-4438  
[rschaub@ksu.edu](mailto:rschaub@ksu.edu)

**Chelsea Richmond**

District Agent  
Nutrition, Food Safety and Health  
Garnett Office  
785-448-6826  
[crichmon@ksu.edu](mailto:crichmon@ksu.edu)

**Lauren Gammill**

District Agent  
Horticulture and Natural Resources  
Ottawa Office  
785-229-3520  
[laurengammill@ksu.edu](mailto:laurengammill@ksu.edu)

**Jessica Flory**

District Agent  
4-H Youth Development  
Ottawa Office  
785-229-3520  
[jrflory@ksu.edu](mailto:jrflory@ksu.edu)

**Jo Hetrick-Anstaett**

4-H Program Manager  
Lyndon Office  
785-828-4438  
[janstaett@ksu.edu](mailto:janstaett@ksu.edu)

**Josie Medlen**

4-H Program Manager  
Ottawa Office  
785-229-3520  
[josie03@ksu.edu](mailto:josie03@ksu.edu)

**Jeanette Stinebaugh**

4-H Program Manager  
Garnett Office  
785-448-6826  
[jlstineb@ksu.edu](mailto:jlstineb@ksu.edu)

**Kierstyn Blaufuss**

Office Professional  
Ottawa Office  
785-229-3520  
[kierstynb@ksu.edu](mailto:kierstynb@ksu.edu)

**Liz Drennan**

Office Professional  
Garnett Office  
785-448-6826  
[edrennan@ksu.edu](mailto:edrennan@ksu.edu)

**Anita Sobba**

Nutrition Educator - Kansas SNAP-ED  
Program  
Garnett Office  
785-448-6826  
[anitasobba@ksu.edu](mailto:anitasobba@ksu.edu)

**Kris Wallace**

Nutrition Educator - SNAP-ED  
Ottawa Office  
785-229-3520  
[krwall@ksu.edu](mailto:krwall@ksu.edu)

**Janaya Reed**

Financial Manager and Office  
Professional  
Lyndon Office  
785-828-4438  
[jlhamlin@ksu.edu](mailto:jlhamlin@ksu.edu)

**Carol Engle**

Communications & Marketing  
Manager  
Ottawa Office  
785-229-3520  
[carolengle@ksu.edu](mailto:carolengle@ksu.edu)