

4-H UPDATE

June 2025

Garnett Office
411 S. Oak
PO Box 423
Garnett KS 66032-0423
Phone: 785-448-6826
FAX: 785.448.6153

Lyndon Office
128 W. 15th
PO Box 400
Lyndon KS 66451
Phone: 785-828-4438
FAX: 785.828.3427

Ottawa Office
1418 S. Main,
Suite 2
Ottawa KS 66067
Phone: 785-229-3520
FAX: 785.229.3527

GREAT THINGS HAPPENING....

This summer for the Frontier District has an intern. Housed in the Lyndon Office is Brooklynne Morrison. Brooklynne will be traveling as the District intern in all areas! Stop by the office and welcome them and wish them luck this summer!



2025 Fair Books

Anderson County Fair Book will be available in the office and online in the middle of June.

Osage County Fair Book is on the [website](#)

Franklin County Fair Book is on the [website](#)

Pizza Day Camp

Do you like cooking? Do you also like pizza. Save the date for **June 16th**. We will spend the day making homemade pizza dough, learn about how to make a healthy pizza fit into our plate. We will then end the day making a yummy dessert! Check out the flyer at the end!

AT A GLANCE

- [Calendar](#)
- [Enrollment](#)
- [Setting Project Goals](#)
- [Kansas Clover Classroom](#)
- [Rock Springs Camp](#)
- [Scholarships](#)
- [Entomology](#)
- [Horse Project Updates](#)
- [District Clubs](#)
- [Anderson Activities](#)
- [Osage Opportunities](#)
- [Franklin Festivities](#)
- [Meet the Staff](#)

OFFICES CLOSED

- May 26th
- June 19th
- July 4th

4-H Calendar

JUNE

June 1 Horse ID Papers Due

June 3 SE Area Livestock Judging Contest

June 5 Last Day to Order Small Animal DNA Envelopes for Nominations

June 10 Board Game Day Camp in Garnett

June 12 SE Area Photo and FCS Judging Contest

June 13-15 State Geology Trip

June 15 Small Animal Nominations Due

June 16 Pizza Day Camp in Ottawa

June 27 Horticulture/Outdoor Day Camp in Osage County

June 27-28 Insect Spectacular

AUGUST

Aug. 5-8 Overbrook Fair

SEPTEMBER

Sept. 5-19 Kansas State Fair

OCTOBER

Oct. 2026 4-H Enrollment Open

JULY

July 10-12 Richmond Free Fair

July 14-19 Franklin County Fair

July 16-19 Osage City Fair

July 28-Aug 1 Anderson County Fair

K-STATE
Research and Extension



Frontier
District

A message from your 4-H Agent

Summer of Learning: Embrace the Challenge with 4-H

Summer is a special time in 4-H when we can learn by doing and take on new challenges! I want to share a heartwarming memory from a summer when my dad stepped back to let my sisters and me take charge of our dairy heifers. I was in 4th grade, and my sisters were in 2nd and 6th grade. It was Chelsy's first year in 4-H, and together we had six calves to clip.

My mom and dad were busy putting up hay and silage, so Dad told us it was our turn to get the calves ready for the fair. He showed us how to clip the first one, and then it was up to us! It wasn't easy, though. There were moments filled with sweat, frustration, and even tears. But after all our hard work, we felt so proud of what we accomplished together!

I encourage everyone this summer to try something challenging! Even if things don't go as planned, that's part of growing and learning. Stepping slightly outside our comfort zones helps us explore new skills and discover what we're capable of. So let's embrace this summer with open hearts and eager minds!

District Details

Leaders have you...

Review

- Looked over deadlines & dates?
- Promoted enrollment
- Checked Volunteer enrollment
- Encouraged 4-H members to ask a friend to attend meetings
- Reminded all 4-H members and parents who are volunteers to enroll via 4-H Online

To-Do

- Check mailbox at the Extension Office
- Report from 4-H Council Meetings
- Update Volunteer Renewal information



Animal Science Newsletter

Did you know that there is a monthly newsletter written by the KSU Animal Science Department. Be sure to check it out, as they write important topics, such as camps coming up, upcoming events, topics you might need to know in the barn. Check out the link above to find information you might need to know!



Keeping Track of Project Goals

After choosing project goals, it is important to keep track of what you have learned and accomplished. What new skills have been gained? Who is helping you along the way? Here is your reminder to take pictures and notes to make filling out PRRF's so much easier! There are resources to help members!



Kansas Clover Classroom

The Kansas Clover Classroom is an amazing 4-H project supplemental guide available to 4-H families. Taking photos, designing a cabinet, building rockets, collecting insects, tending to livestock...those activities are part of a much bigger, project-based learning process to prepare youth for the future. Which challenge will you take on?



Rock Springs Camp 2025

Summer Camp 2025 registration is filling up! There are **now seven** different traditional 4-H camp dates in June and July. We recommend **Session two!** There are also three CIT dates in June and July and two LIT dates in June. They have also added a two night mini camp for rising 1st-3rd graders, as well as a Specialty camp for rising 6th-9th graders. Transportation schedules are being finalized. Check out which date and/or camp works best for you! Camperships (scholarships) are available for all levels!

District Details

Members have you... Checked off

- Re-Enrolling in 4-H?
- Asked a friend to join
- Signed Up to Present at a Club Meeting?
- Set Project Goals?
- Finalized Projects for the year?

Review

- 4-H members: ask a friend to attend meetings
- Remind all 4-H members and parents who are volunteers to enroll via 4-H Online
- Provide officers and clubs leadership updates as soon as possible to the Extension Office



American Royal Stem Camp

The American Royal is putting on an Ag STEM Camp June 11 from 7:30 a.m.-12 p.m. in Kansas City. The American Royal STEM Camp experience is intended to engage middle school students (6th, 7th, and 8th graders) in the Kansas City Region in a 3-day agriculture (ag) based STEM experience. Students will participate in discussion and hands-on activities that are directly connected to the ag industry and ag careers. As a day camp, there will be themed days to expose students to a broader spectrum of agriculture. These include a day oriented toward plant, animal, and ag technology content areas. Cost is \$45 per participant. Registration information is included on the attached flyer



Feed Your Future Camp

KSU is hosting a camp with Agronomy and Grain Science Departments in an effort to increase awareness of the departments offered for future enrollments with K-State Ag. The camp will take place July 16-20, 2024. Camp will feature Agronomy, Milling Science, Bakery Science and Feed and Pet Food Science. Only 30 participants are allowed, so please fill out the interest form, and a registration will be provided!



Entomology Meeting

The June Entomology project meeting will be on June 14th. Hopefully Mother Nature cooperates with good weather. Please note the time change - we will meet at 1:30 p.m. The location will be at Vicky's home at 2447 40th Road, Humboldt, Ks. We will be going out and trying to collect some insect specimens. Bring your nets, kill jars and specimen containers. You will want to wear long pants and enclosed shoes. If you want to try to wade in the shallow water of the pond or creek to catch water insects, you will need mud boots. You might want to bring a change of clothes - just in case you get wet and/or muddy. Insect spray and sunscreen are recommended. Call Vicky at (620)804-9170 if you need further directions to her house.

District Details

Member/Volunteer Enrollment

The new 4-H year began **October 1st**, so it is time for new and returning 4-H members and volunteers to enroll. All returning 4-H members and volunteers should be re-enrolled by December 1st. Projects and/or clubs will need to be added when enrolling. Project years should auto-populate, if not, please call the office. Families are also encouraged to confirm the email address and phone numbers for the family and for each member or volunteer. Direct any questions or concerns to the Extension Office.

- [Click here to enroll](#)
- Create an account
- Select your participation type
- Choose your county & club
- Select your projects (remember, once you have enrolled, if you need to add more, message your Extension Office.)
- Review consent forms, there are more this year!
- Enter member information
- Click submit!



Horse Project Updates

The [Kansas 4-H Horse ID Certificate \(P1039\)](#) has been updated for the 2025 4-H program year. Beginning with the 2025 4-H program year, please use the new form and destroy previously used 4-H Horse ID Certificates. As a reminder, to properly identify your horse, complete the 4-H Horse ID Certificate, have your Extension Agent sign it and copy it. A COPY of the Horse ID Certificate is kept on file in the Extension Office and the 4-H Horse member maintains the ORIGINAL certificate. The original certificate is presented by the 4-H member to show staff for check-in at the local 4-H horse shows. Beginning in 2025, registration papers WILL NOT be accepted to identify horses for the 4-H Horse project. An [example of the Horse ID Certificate](#) is available online



Important Livestock Dates

Check out the Youth Livestock Program Newsletter or “like” the Kansas State Youth Livestock Program on Facebook!

5/1/25: Market Beef Nominations Due for KSF & KJLS

6/5/25: Last day to order Small Animal Livestock DNA Envelopes for nominations

6/15/25: Commercial Heifer, ALL Swine, ALL Sheep and ALL Meat Goat Nominations Due for KSF & KJLS.

9/5-14/25: Kansas State Fair

10/3-5/25: Kansas Jr. Livestock Show



KSF & KJLS Information

Families planning to participate in the Kansas State Fair Grand Drive or the Kansas Junior Livestock Show will need to Order DNA envelopes. Families will purchase envelopes directly through ShoWorks for each animal to be nominated. The cost will be \$12/animal.

1) DNA envelope orders will close **June 5th** for small livestock. Families must get envelopes ordered early! DO NOT WAIT!

2) Market Beef Nominations due **May 1st**. Commercial Heifer, ALL Swine, ALL Sheep and ALL Meat Goat Nominations are due **June 15th**.

3) NOTE: ENTRY IS ONLINE ONLY!

GRAND DRIVE & KJLS IMPORTANT DATES

April 20	Last Day to Order Beef DNA Envelopes
May 1	Market Beef Nominations Due Online & DNA Postmarked
June 5	Last Day to Order Small Livestock DNA Envelopes
June 15	Small Livestock Nominations Due Online & DNA Postmarked <ul style="list-style-type: none">-Market Swine, Commercial Breeding Gilt-Market Lamb, Commercial Breeding Ewe-ALL Meat Goat (<i>Market & Breeding</i>)
	Commercial Heifer Nominations Due Online & DNA Postmarked
	Registered Breeding Heifer Papers in Exhibitor's Name
	Registered Steer Papers in Exhibitor's Name
	Registered Breeding Gilt Papers in Exhibitor's Name
July 1	Registered Breeding Ewe Papers in Exhibitor's Name
July 15	Kansas State Fair Grand Drive Entry Deadline
July 25	Kansas State Fair Grand Drive Late Entry Deadline
August 15	KJLS Entry Deadline
August 31	KJLS Late Entry Deadline
Sept. 5 - 7	Kansas State Fair Grand Drive
Oct. 3 - 5	KJLS

*All market animals must be nominated to be eligible for either show, regardless of breed or gender.

**All commercial breeding females must be nominated to be eligible for either show.

***Registered breeding females must be in the exhibitor's name by the appropriate date to be eligible for either show. Refer to show rules for details.

****All meat goats, including market, commercial breeding does, and registered breeding does must be nominated to be eligible for either show.

Highly pathogenic avian influenza, or HPAI, is a rapidly spreading viral disease that can infect many types of birds. Avian influenza, often called avian flu or bird flu, can be common, but some strains are highly pathogenic, which means they are more deadly. Introduced by migrating wild birds, HPAI can spread through spring migration and affect all domestic poultry — small and backyard flocks as well as commercial industries.

Poultry with HPAI do not survive the illness. Vaccines for HPAI are not readily available.

Signs of Avian Influenza

- Coughing and sneezing
- Difficulty breathing
- Extreme depression
- Lack of energy
- Decrease in feed or water intake
- Swelling or purple discoloration of head, eyelids, comb, wattle and legs
- Decrease in egg production
- Sudden unexplained death

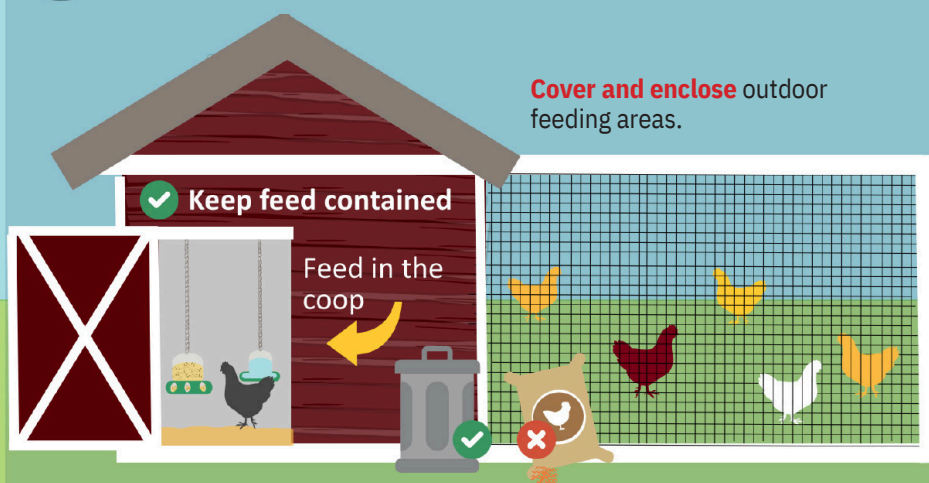
Biosecurity is your best option to prevent HPAI from entering your small or backyard poultry flock.

Here is what you can do:

Protect Your Small Flock from Avian Influenza

1

Avoid attracting wild birds and waterfowl to your home or farm. Song birds, sparrows, starlings, etc. are **low risk**.



- Clean up** feed spills.
- Reduce** puddles and standing water.
- Avoid** visiting ponds and streams, especially with pets.
- Do not** move birds from farm to farm.
- Isolate** new birds.



2

Limit or **halt** travel with your birds to sales, shows and swaps. Ensure you have clean hands, clothes, and footwear before handling your birds if you attend events. **Do not** allow others to handle your birds.



3

Limit your birds' visitors. If someone must visit your birds: discuss where they have been. Have them wash their hands and wear clean clothes and footwear.



Call your veterinarian if your flock shows signs of influenza or you suspect exposure. No veterinarian? Call the Kansas Department of Agriculture's Division of Animal Health at 785-564-6601.

Anderson Activities

County Council Committees

National 4-H Week	All Clubs
Achievement Night Celebration	Lucky 13
County Wide Fun Event	Star Shooting
County Wide Community Service	Cherry Mound
Club Days	Lucky 13
Recognition of 4-H Seniors	Cherry Mound
District Wide Day Camp	Star Shooting
New Member Event	All Clubs
After Fair Pool Party Treats	Seekers Not Slackers
District Activity	Seekers Not Slackers



4-H Council Meeting

Our **rescheduled** meeting will be **June 9, 2025 at 7:00 p.m. in the Extension Office Meeting Room. Club Leaders will meet at 6 pm.** Be sure to attend and represent your club as there must be a leader and youth representative from each club at every meeting in order for the club to be on track to receive a purple seal at year's end.



DNA Envelope Purchase

Families planning to participate in the Kansas State Fair Grand Drive or the Kansas Junior Livestock Show will need to order DNA envelopes. Families will purchase envelopes directly through ShoWorks for each animal to be nominated. The cost will be \$12/animal. DNA envelope orders will close **June 5th** for small livestock. Families must get envelopes ordered early! DO NOT WAIT!



Anderson County Born Nominations Form

Anderson County Born Nomination Forms for the fair are **due** in the Garnett office by **July 11th**. Forms are available at the Extension office and on our Extension webpage. Youth enrolled in the Rabbit, Fowl or Breeding Livestock project(s) must own and have possession of his/her animal(s) by June 1st.



Horse ID Paper

This identification certificate must be submitted to the county or district agent by **June 1** of the current year to qualify this animal for 4-H horse shows, including the state show. The original ID form with pictures must be kept by the 4-Her(s) and presented at Fair or State Fair check-in. A copy will be kept in the county office. Please attach a standard-size picture on the back right-hand corner.



Quilt Raffle

Ticket packets for the quilt raffle will be given to club leaders by the first part of June. The money raised will be used for the Anderson County 4-H Scholarship for graduating Senior.



Fair Information and Pre-Entry

Richmond free Fair: July 10th - 12th, 2025.

Anderson County Fair: July 28th – August 1st, 2025.

All Fair entries must be pre-entered online through Fair Entry. A link will be available June 9th - July 11th. Anyone not entered during the allotted time will be assessed a \$25 late fee.

Pre-fair judging will be held July 26th, 2025.

Anderson County Born forms for the fair are due in the Garnett Office by July 11th. Forms can be found on our website or at the Extension Office in Garnett. Youth enrolled in the Rabbit, Fowl or Breeding Livestock project(s) must own and have possession of his/her animal(s) by June 1st.

New day for Horse Show--This year the Horse Show will be Thursday morning at the rodeo arena. Check in will be 7:30 a.m. and the show will begin at 8:00 a.m. Please have your Horse ID papers and proof of a negative Coggins test in hand at check-in.

Osage Opportunities

County Council

June 30 @ 7 p.m.

Lyndon Extension Office

County Wide Fundraiser	MJH
Club Day	NO
Achievement Night Celebration	WW
District Wide Day Camp	Ambassadors
Council By-laws & National 4-H Week	BG
District Wide Event	LL

Save The Date:

Style Revue Judging:

July 9

Osage City Fair:

July 16-19, 2025

Overbrook Fair:

August 5-8



Osage City Fair Pre-Entry

Osage City Fair Pre-Entry will be June 23rd-July 7th. All entries (static, livestock and small animal) must pre-enter for the Osage City Fair using the FairEntry system. Late entries will be charged \$25 per exhibitor. A link will be provided when Pre-entry opens.



Style Revue Judging & Show

Style Revue Judging will take place before the fair on July 9th at 9:00 a.m. at Lyndon's First Baptist Church, 129 W. 15th Street. Registration will be required. Registration form will be emailed out mid-June and will be due July 3rd. The public Style Revue will be July 16th at 7:00 p.m. in the Community Building at the Osage City Fair. Style Revue is open to all 4-Hers enrolled in Sewing & Textile Design and Shopping In Style.



Osage County Fair T-shirts

All properly enrolled Osage County 4-H members will receive a free fair t-shirt courtesy of Landmark National Bank and the 4-H Council. By June 10th please make sure the t-shirt size in 4-H Online is correct. Volunteers, parents, Cloverbuds and non-4-H siblings that would like a shirt will need to bring the [order form](#) and \$15 per shirt to the Extension Office by June 10th. Direct all questions to Jo at the Lyndon Extension Office.



Overbrook Fair Sale Information

The Overbrook Fair sale will be a premium only sale again this year. You will need to make spots for animals to be processed and find your own floor buyers. Contact the office with any questions.



Osage City Fair Sale Information

The Osage City Fair Board is requesting youth that will be selling bring the following for the Buyer's Dinner:

Last Names A-M: a dessert

Last Names N-Z: side dish/veggie

For questions or more information, please contact an Osage City Fair Board Member.

Franklin Festivities

County Council

June 2nd, 6:30 p.m. @
Commission Chambers, 1418 S.
Main, in Ottawa (down the hall
from the Extension Office)

Club Day	RR
District Wide Day Camp	BGG & AR
Livestock Buyer Appreciation	SH
National 4-H Week Marketing	FOP & SS
Achievement Night Celebrations	RW
District Wide Event	PGB
Community Service & Fair Goody Plates	AT



Save the Date

Franklin County Fair;
July 14-19, 2025



Concession Stand Sign-Up

We are using Sign-Up Genius again this year! Sign-up will be open from **June 1-16**, and it's very important that each family participates.

Each family is required to sign up **every 4-H member individually, along with one adult volunteer**. The adult can be a parent, grandparent, aunt, uncle, or other responsible adult. This is 4-H Council's only fundraiser, and your help is essential to its success. We're only asking for a few hours of your time during fair week—your support makes a big difference!

💡 If you do not sign up by **June 16**, a time slot will be assigned to you.

Please Keep in Mind:

- Sign up each person **individually**—do not list multiple people in one slot.
- For youth, include their **full name and age**.
- For adults, include their **full name**.
- Each person may only sign up for **one time slot**.
- Please arrive **10-15 minutes early** to ensure a smooth transition.
- There is **limited space**, so please be mindful of extra things you bring to your shift.
- Please wear **closed toe shoes**.

🙋 If you aren't showing animals in the evening and are able to cover an evening shift, please consider taking one—your flexibility helps others manage their responsibilities, too.

Spots will fill up quickly, so be sure to grab a slot that works for you as soon as possible!

We truly appreciate your time, your support, and your dedication to 4-H. If you have any questions, please contact the office.

Thank you!



Fair T-Shirt

Properly enrolled Franklin Co. 4-H members will receive a free fair t-shirt courtesy of Patriots Bank. Anyone else wanting a shirt must fill out a form and return it with payment to the Ottawa Extension Office by **June 11th**. Shirts are \$7.50 for sizes YXS-YXL and Adult S-XL Sizes 2XL and 3XL are \$2 more. Exact change is required if paying with cash and checks should be made payable to Franklin County 4-H Council. Credit cards cannot be accepted.

Franklin Festivities

Franklin County Fair Info.

Franklin County Born & Raised Forms, Pure Bred, & Family Nominations: Due **June 16th** for all market species.

Bucket Calf: Members enrolled in Clothing or Bucket Calf have paperwork which must be presented at judging time during the Franklin County Fair. Bucket Calf members must present the project record sheet.

Fair Pre-Registration: Fair pre-registration forms will be available **May 19th- June 16th**. This includes fashion revue cat/handpet, dog, poultry, rabbit, and livestock. Also, youth who wish to participate in conference-style judging for the following projects will be required to pre-register online: Energy Management, Entomology, Forestry, Geology, Home Environment, STEM, Self-Determined, Shooting Sports, Wildlife and Woodworking. The Extension Office will assign judging times. Direct all questions to the Extension Office.

Clover bud: You must call the office to schedule a time for Cloverbud judging. Judging is **July 15th** begins at 12:00 p.m.

Concession Stand Sign up: Sign-up will be open June 1st -16th. Each family will need to have one adult sign up to work as well as every 4-H Member!

Mr./Miss 4-H: All properly enrolled Franklin Co. 4-H members who are/will be in high school a few more years are encouraged to apply for Mr. or Miss 4-H. Applications are due by **June 16th**. The mandatory interview will be **July 7th** at the First Baptist Church, 410 S. Hickory, in Ottawa beginning at 10:00 a.m. Deliver or email applications to the Ottawa Office. Call to schedule an interview time!

Pre-Fair Judging: July 7th-Clothing, Fiber Arts, Mr./Miss 4-H Interviews; 1st Baptist Church, 410 S. Hickory, Ottawa

July 14th-Foods (9 AM-11 AM, club assigned times), CB Hall; Photo & Visual Arts (1:30-4:00 P.M., club assigned times), CB Hall

July 14th-Fair Kick-Off 6:00 - 8:00 p.m.

Franklin County Born (purebred) Forms

ALL pure bred Market/ Breeding species must have papers in the child's name (not family name) by May 1st. Must then turn copy in by June 21st into office, or email Josie at josie03@ksu.edu.

Franklin County Fair Updates

Please read the letter attached. For any questions please contact the office.

Fair Kick off and Food Drive

The 2025 Franklin County Fair Kick off begins at 6:00 p.m. **Monday, July 14th**. The Fair theme for 2025 is "Giddy Up and Glow" There will be games, food, etc.. Bring your best dance moves!

The Appanoose Trailblazers will be doing a Food Drive this year. More information to come!

T-Shirt Order Form



2025 FRANKLIN COUNTY FAIR

785-229-3520

1418 S Main St Suite 2 Ottawa KS

josie03@ksu.edu

Adult	Qty	Youth	Qty
<input type="radio"/> XS		<input type="radio"/> S	
<input type="radio"/> S		<input type="radio"/> M	
<input type="radio"/> M		<input type="radio"/> L	
<input type="radio"/> L		<input type="radio"/> XL	
<input type="radio"/> 1X			
<input type="radio"/> 2X			
<input type="radio"/> 3X			

CUSTOMER INFORMATION

NAME

ADDRESS

EMAIL/PHONE

ORDER DATE

Color of T-shirt(s) _____



Each Club is assigned a different t-shirt color-feel free to choose any color you'd like!

- ☐ Daisy - Acorn Rustlers
- ☐ Neon Green - Appanoose Trailblazers
- ☐ Heliconia-Full-O-Pep
- ☐ Tennessee Orange - Burg Go Getters
- ☐ Carolina Blue - Princeton Goal Busters
- ☐ Safety Pink - Rambling Ranchers
- ☐ Tropical Blue-Rowdy Wranglers
- ☐ Tangerine - S.H.A.F.F.
- ☐ Kiwi - Shooting Sports

PAYMENT METHOD



☐ Cash



☐ Check

Cost: \$7.50

+\$2.00 for 2x and 3x

TOTAL	
-------	--

Orders are due by June 11th - Pick up July 2nd



Pizza DAY CAMP

Do you enjoy Pizza? Did you know pizza can be good for your diet? Join us for day filled with learning the importance of your My Plate, how to have a balanced meal followed by making a healthy pizza, and tasty desert pizza!



**JUNE 16, 2025
9 AM- 3 PM**

OTTAWA HIGH SCHOOL
1120 S ASH ST, OTTAWA, KS 66067



**THERE IS A FEE OF \$7
FOR LUNCH AND
SUPPLIES. PAYMENT
TAKEN AT ANY OFFICE.
MAKE CHECKS
PAYABLE TO FRANKLIN
COUNTY 4-H COUNCIL.**

**PLEASE SCAN THE QR CODE TO
REGISTER. REGISTRATION CLOSSES
JUNE 9TH.**



**ONLY 20
SPOTS
OPEN!
AGES 7-18.**



Handy Links!

Please follow the links for more information

4-H Policy

The current KSRE and 4-H practices cover the new requirements and are now included as a reference in the policy.

Electronic Treasurers Book

An electronic version of the Treasurer's Book is available for any club or group to use. Located at the bottom of page on the club resource's page!

Helpful Resources

Here are some resources to help guide you in projects, or any national curriculum that might be helpful!

Raffle Policy and Guidelines

Any Extension unit-affiliated group (e.g. 4-H club, 4-H project group, etc.) wanting to conduct a raffle must first fill out and submit an application.

Frontier District Website

This is our website that holds lots of great information!

Frontier District Facebook

Follow us on Facebook for updated information!

Kansas 4-H Website

This is the Kansas 4-H website and is an excellent resource. Information about state events, project materials and the state 4-H newsletter is available.

District Wide Project Leaders

A list of District-wide projects and leaders is available to Frontier District 4-H members.

Disabilities Accommodations Request Form

The Americans with Disabilities Act (ADA) requires persons with disabilities be provided "reasonable" accommodations and prohibits discrimination against persons with disabilities. Accommodations are generally considered reasonable if they don't change the fundamental nature of the program or alter the essential criteria for participation. Accommodations meeting these standards should typically be provided. Reasonable accommodations are determined through an interactive process between the community member and local and State 4-H Offices. It is essential for the Accommodation Request Form to be filled out FIRST at the local level in collaboration with a local Extension Professional to launch a formal accommodations process. Because it can take time to plan for accommodations, KSRE requests this form be submitted no later than two weeks prior to the event/activity. Submitting a request on shorter notice may reduce and/or limit any ability to implement accommodations.



Meet the Staff

Rebecca McFarland

District Director
Family and Community Wellness
Agent
Ottawa Office
785-229-3520
rmcfarla@ksu.edu

Janae McNally

District Agent
Adult Development and Aging
and Family Resource Management
Lyndon Office
785-828-4438
jmcnally@ksu.edu

Ryan Schaub

District Agent
Crop Production and Farm
Management
Garnett Office
785-448-6826
reschaub@ksu.edu

Rod Schaub

District Agent
Livestock Production
Lyndon Office
785-828-4438
rschaub@ksu.edu

Chelsea Richmond

District Agent
Nutrition, Food Safety and Health
Garnett Office
785-448-6826
crichmon@ksu.edu

Lauren Gammill

District Agent
Horticulture and Natural Resources
Ottawa Office
785-229-3520
laurengammill@ksu.edu

Jessica Flory

District Agent
4-H Youth Development
Ottawa Office
785-229-3520
jrflory@ksu.edu

Jo Hetrick-Anstaett

4-H Program Manager
Lyndon Office
785-828-4438
janstaett@ksu.edu

Josie Medlen

4-H Program Manager
Ottawa Office
785-229-3520
josie03@ksu.edu

Jeanette Stinebaugh

4-H Program Manager
Garnett Office
785-448-6826
jlstineb@ksu.edu

Kierstyn Blaufuss

Office Professional
Ottawa Office
785-229-3520
kierstynb@ksu.edu

Liz Drennan

Office Professional
Garnett Office
785-448-6826
edrennan@ksu.edu

Anita Sobba

Nutrition Educator - Kansas SNAP-ED
Program
Garnett Office
785-448-6826
anitasobba@ksu.edu

Kris Wallace

Nutrition Educator - SNAP-ED
Ottawa Office
785-229-3520
krwall@ksu.edu

Janaya Reed

Financial Manager and Office
Professional
Lyndon Office
785-828-4438
jlhamlin@ksu.edu

Carol Engle

Communications & Marketing
Manager
Ottawa Office
785-229-3520
carolengle@ksu.edu