

4-H UPDATE

July 2025

Garnett Office
411 S. Oak
PO Box 423
Garnett KS 66032-0423
Phone: 785-448-6826
FAX: 785.448.6153

Lyndon Office
128 W. 15th
PO Box 400
Lyndon KS 66451
Phone: 785-828-4438
FAX: 785.828.3427

Ottawa Office
1418 S. Main,
Suite 2
Ottawa KS 66067
Phone: 785-229-3520
FAX: 785.229.3527

GREAT THINGS HAPPENING....

Meet Jamie! Jamie is the new Frontier Extension District Office Professional housed in the Ottawa Office. She began June 9th and is 4-H Alumni of Shawnee County! Jamie is from Overbrook where her family is members of the North Osage 4-H Club. She was a 4-H leader for several years, and has a passion "To Make The Best Better!" Make sure to stop in the Ottawa office and say hello.

2025 Fair Books

Anderson County Fair Book is on the [website](#).

Osage County Fair Book is on the [website](#)

Franklin County Fair Book is on the [website](#)

Fair Shirt Distribution

Be sure to express your appreciation to your sponsor when picking up yours/your family's! An email will be sent with pick up details. Distribution in each county will be as follows:

Anderson County: Contact your leader for your shirt.

Franklin County: Club leaders or a designated person will need to pick up shirts from the Extension Office in Ottawa and distribute to the club. Patriots Bank is the sponsor!

Osage County: Members will pick up shirts from a Landmark Bank employee at the Osage City Fair on check in day. Shirts not picked up at Osage are available at Overbrook.

AT A GLANCE

- [Calendar](#)
- [Enrollment](#)
- [Setting Project Goals](#)
- [Kansas Clover Classroom](#)
- [Rock Springs Camp](#)
- [Scholarships](#)
- [Entomology](#)
- [Horse Project Updates](#)
- [District Clubs](#)
- [Anderson Activities](#)
- [Osage Opportunities](#)
- [Franklin Festivities](#)
- [Meet the Staff](#)

OFFICES CLOSED

- July 4th

4-H Calendar

JULY

July 10-12 Richmond Free Fair
July 14-19 Franklin County Fair
July 16-19 Osage City Fair
July 28-Aug 1 Anderson County Fair

AUGUST

Aug. 1 Kansas State Fair Horse Due
Aug. 5-8 Overbrook Fair
Aug. 8 KSF Entry Forms Due
Aug. 12 KSF Entry Forms from Overbrook Due
Aug. 27 KSF Non-Perishable Items Due to Office

SEPTEMBER

Sept. 3 KSF Perishable Items Due to Office
Sept. 5-14 Kansas State Fair
Sept. 17 PRRFs Due to Office

OCTOBER

Oct. 2026 4-H Enrollment Open



FAIR

LIFE

A message from your 4-H Agent

Summer of Learning: Embrace the Challenge with 4-H

Summer is a special time in 4-H when we can learn by doing and take on new challenges! I want to share a heartwarming memory from a summer when my dad stepped back to let my sisters and me take charge of our dairy heifers. I was in 4th grade, and my sisters were in 2nd and 6th grade. It was Chelsy's first year in 4-H, and together we had six calves to clip.

My mom and dad were busy putting up hay and silage, so Dad told us it was our turn to get the calves ready for the fair. He showed us how to clip the first one, and then it was up to us! It wasn't easy, though. There were moments filled with sweat, frustration, and even tears. But after all our hard work, we felt so proud of what we accomplished together!

I encourage everyone this summer to try something challenging! Even if things don't go as planned, that's part of growing and learning. Stepping slightly outside our comfort zones helps us explore new skills and discover what we're capable of. So let's embrace this summer with open hearts and eager minds!

Kansas State Fair Information

September 5-14, 2025



KANSAS STATE FAIR - The Fairbook is available online. Contact the Extension office to have questions answered. A schedule of events is available.

ENTRIES: STATE REQUIREMENT - The State of Kansas requires all livestock exhibitors to provide a completed W-9 form each year PRIOR to issuing any premium winnings. Complete a W-9 and submit or send it to the Kansas State Fair, ATTN: Competitive Exhibits Dept., 2000 N. Poplar, Hutchinson, KS 67502 prior to the start of the Fair. Forms can also be completed when setting up an exhibitor account at www.kansasstatefair.com

All Entries Must Be Pre-Registered!

Horses.....August 1st

All other exhibits.....August 8th

Overbrook exhibits.....August 12th

Two gate tickets, instead of premium money, will be provide to each 4-H members entering static exhibits.

Entries must be submitted using the collection sheets found on the Area & State Events page on our website. Please download the form, save it and then fill it out, save it again and then email/print. ONLY entries from the Overbrook fair will be accepted until August 12th. Members may call or come into the offices and pre-enter all State Fair Exhibits.

Entering Exhibits for the Kansas State Fair

Horses - Members must be at least 9 years old and have completed the list of requirements.

Please refer to the [link for the KSF Horse Show Requirements](#).

Visual Arts - Members must be at least 9 year old and have had members exhibit selected by the judge at a qualifying fair. Each county may send one exhibit in each of the eligible five categories. Eligible exhibitors will receive some sort of notification (email, call or ribbon) if his/her exhibit has been chosen.

Fiber Arts - Member must be at least 9 year old and have received a purple ribbon on the exhibits at a qualifying fair.

Most Other Exhibits - Members must be at least 9 years old and have received a purple ribbon at a qualifying fair.

Poultry, Rabbits & Dogs - Members must be at least 9 year old and have received a purple or blue ribbon at a qualifying fair.

Demonstration/Illustrated Talks - Member must be at least 9 years old and have received a purple ribbon on members project talk or demonstration/illustrated talk at the District Club Day competition in February of 2025. Those eligible received an email from the extension office in Early July.

Fashion Revue - Member must be at least 10 (this age changed in 24') years of age and have been chosen by the judge to represent the county.

KSF entries MUST BE PRE-Entered by August 8th.

Getting Exhibits to the Kansas State Fair

All perishable and non-perishable items **must be pre-entered in the Extension Office by August 8th**. It is a simple process. Members may call or come into the office and pre-enter.

Items going to the State Fair must be turned to the members home office. All **non-perishable** exhibits should be dropped off at the Extension office by **Wednesday, August 27th**. **Perishable items** should be delivered to the Extension office by **4:00 pm on Wednesday September 3rd**.

Direct all questions to the Extension office. **Any exhibit not pre-entered will not be accepted or sent to the State Fair.** The Extension office will take as many exhibits to the State Fair as the vehicle can hold. **NO LIVE ANIMALS.** For large items, such as woodworking, electrical, legos and etc, please check with the office ahead of time for space. We will pick up all exhibits we dropped off. Any members wanting to drop off and pick up their own project, must contact the office.

Project Record Report Forms

Due September
17th, 2025

What you need for
your PRRF

- Project recognition checklist
- Personal information page
- Project report form rubric
- Zbook or Form Fillable pdf

Zbook vidoes

- [How to Create a ZBooks Account](#)
- [How to Create a Project Report Form in ZBooks](#)
- [Starting Your Kansas 4-H Permanent Record](#)
- [How to Start a Second Year with ZBooks](#)



Local Record Keeping & Project Report Forms

Record keeping and Project Reporting are valuable skills taught to members of the Kansas 4-H program. Members are encouraged to keep a permanent record of all 4-H and Non-4-H Experience and are encouraged to summarize their experiences on the Kansas 4-H Project Report Form for project recognition.



Project Record Report Forms

- [Junior General Project Report Form](#) (ages 7-9) fillable PDF
- [Junior Animal Project Report Form](#) (ages 7-9) fillable PDF
- [Intermediate General Project Report Form](#) (ages 10-13) fillable PDF
- [Intermediate Animal Project Report Form](#) (ages 10-13) fillable PDF
- [Senior General Project Report Form](#) (ages 14-18) fillable PDF
- [Senior Animal Project Report Form](#) (ages 14-18) fillable PDF



ZBOOKS ONLINE 4-H RECORD KEEPING

To access the online record books, please visit [ZBooks here](#) . These help links will get you started, as will the video tutorials below:

- [Account Registration Instructions](#)
- [Creating Member Profiles](#)
- [Creating a New Project Report](#)
- [How to Download/Submit a Project Report Form and/or Permanent Record](#)



Officer Book Rubrics

- [Reporter](#)
- [Historian](#)
- [Secretary](#)
- [Treasurer](#)

Project Record Report Forms

Helpful tips

- [Guide to Kansas 4-H Project Recognition](#)
- [Zbook Resource Guild](#)
- [Pin Application - Member Achievement Awards & Key Award](#)

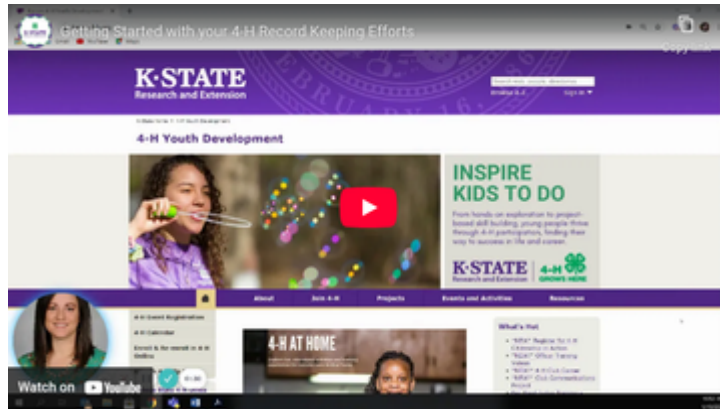
Due September
17th, 2025

Helpful tips

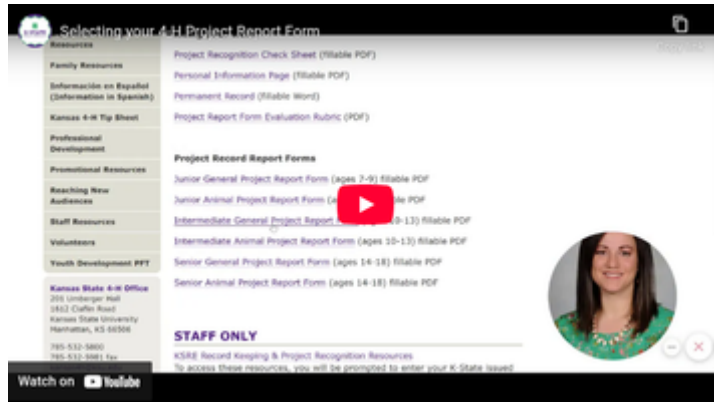
- [Permanent Record \(PDF\)](#) - [Permanent Record \(Word\)](#).
- [Permanent Record Sample](#)
- [Permanent Record Q & A](#)
- Photos - can be together at the end or after each Project Record. Captions are not required, but are encouraged.
- Members need to include the purple [Record Book Check Sheet](#).
- **You do not need the Permanent Record turned in at the county level. Only turn your Permanent Record to your club for judging.**
- Members need to include the appropriate Pin Application* and/or the Key Award Application, if applicable.



Getting Started with Your Record Keeping Efforts



Selecting Your 4-H Project Report Forms



Starting Your 4-H Project Report Form

District Details

Leaders have you...

Review

- Looked over deadlines & dates?
- Promoted enrollment
- Checked Volunteer enrollment
- Encouraged 4-H members to ask a friend to attend meetings
- Reminded all 4-H members and parents who are volunteers to enroll via 4-H Online

To-Do

- Check mailbox at the Extension Office
- Report from 4-H Council Meetings
- Update Volunteer Renewal information



Animal Science Newsletter

Did you know that there is a monthly newsletter written by the KSU Animal Science Department. Be sure to check it out, as they write important topics, such as camps coming up, upcoming events, topics you might need to know in the barn. Check out the link above to find information you might need to know!



Keeping Track of Project Goals

After choosing project goals, it is important to keep track of what you have learned and accomplished. What new skills have been gained? Who is helping you along the way? Here is your reminder to take pictures and notes to make filling out PRRF's so much easier! There are resources to help members!



Kansas Clover Classroom

The Kansas Clover Classroom is an amazing 4-H project supplemental guide available to 4-H families. Taking photos, designing a cabinet, building rockets, collecting insects, tending to livestock...those activities are part of a much bigger, project-based learning process to prepare youth for the future. Which challenge will you take on?



July Entomology Meeting

It is almost Fair time! We will be concentrating on getting ready for the Fair at our July Entomology meeting. We will meet **July 12th** beginning at 1:00 p.m at the Allen County Extension Office. Bring insects you need identified. If you need help deciding how to arrange insects in your box, bring the insects and your box. If you need me to make suggestions on your educational exhibit or photo notebook, bring them for me to look at. If you need help getting labels on insects, bring the insects and labels. See you soon! Questions: call Vicky at (620)804-9170.

District Details

Member/Volunteer Enrollment

The new 4-H year began **October 1st**, so it is time for new and returning 4-H members and volunteers to enroll. All returning 4-H members and volunteers should be re-enrolled by December 1st. Projects and/or clubs will need to be added when enrolling. Project years should auto-populate, if not, please call the office. Families are also encouraged to confirm the email address and phone numbers for the family and for each member or volunteer. Direct any questions or concerns to the Extension Office.

- [Click here to enroll](#)
- Create an account
- Select your participation type
- Choose your county & club
- Select your projects (remember, once you have enrolled, if you need to add more, message your Extension Office.)
- Review consent forms, there are more this year!
- Enter member information
- Click submit!



Horse Project Updates

The [Kansas 4-H Horse ID Certificate \(P1039\)](#) has been updated for the 2025 4-H program year. Beginning with the 2025 4-H program year, please use the new form and destroy previously used 4-H Horse ID Certificates. As a reminder, to properly identify your horse, complete the 4-H Horse ID Certificate, have your Extension Agent sign it and copy it. A COPY of the Horse ID Certificate is kept on file in the Extension Office and the 4-H Horse member maintains the ORIGINAL certificate. The original certificate is presented by the 4-H member to show staff for check-in at the local 4-H horse shows. Beginning in 2025, registration papers WILL NOT be accepted to identify horses for the 4-H Horse project. An [example of the Horse ID Certificate](#) is available online



Important Livestock Dates

Check out the Youth Livestock Program Newsletter or “like” the Kansas State Youth Livestock Program on Facebook!

~~5/1/25: Market Beef Nominations Due for KSF & KJLS~~

~~6/5/25: Last day to order Small Animal Livestock DNA Envelopes for nominations~~

~~6/15/25: Commercial Heifer, ALL Swine, ALL Sheep and ALL Meat Goat Nominations Due for KSF & KJLS.~~

9/5-14/25: Kansas State Fair

10/3-5/25: Kansas Jr. Livestock Show



Kansas 4-H Youth Leadership Council

The Youth Council and National 4-H Conference application will be combined, with applicants indicating if they are applying for one or both opportunities. Any Kansas 4-H member between the ages of 14 and 18 before January 1, 2026 may apply as a Council Rep and those 15-18 before January 1, 2026 may apply for National Conference.

This year's KYLF delegation will elect representatives from the **four extension program regions** (NE, NW, SE, SW) for one year terms on council. Up to six National Conference delegates will be selected through an interview process at KYLF and they serve a two year term on council.

The application deadline is **Wednesday, October 1, 2025.**

Highly pathogenic avian influenza, or HPAI, is a rapidly spreading viral disease that can infect many types of birds. Avian influenza, often called avian flu or bird flu, can be common, but some strains are highly pathogenic, which means they are more deadly. Introduced by migrating wild birds, HPAI can spread through spring migration and affect all domestic poultry — small and backyard flocks as well as commercial industries.

Poultry with HPAI do not survive the illness. Vaccines for HPAI are not readily available.

Signs of Avian Influenza

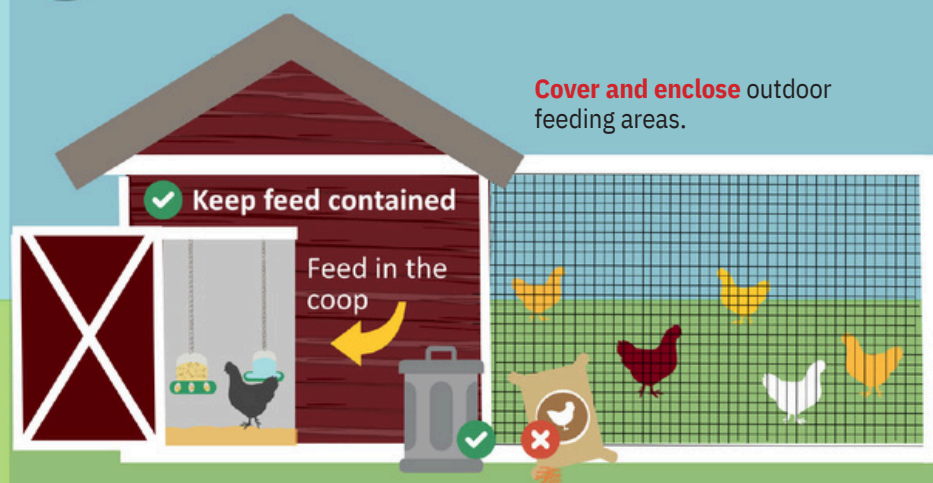
- Coughing and sneezing • Swelling or purple discoloration of head, eyelids, comb, wattle and legs
- Difficulty breathing • Extreme depression • Lack of energy • Decrease in egg production
- Decrease in feed or water intake • Sudden unexplained death

Biosecurity is your best option to prevent HPAI from entering your small or backyard poultry flock.

Here is what you can do:

Protect Your Small Flock from Avian Influenza

- 1** **Avoid** attracting wild birds and waterfowl to your home or farm. Song birds, sparrows, starlings, etc. are **low risk**.



- Clean up** feed spills.
- Reduce** puddles and standing water.
- Avoid** visiting ponds and streams, especially with pets.
- Do not** move birds from farm to farm.
- Isolate** new birds.

- 2** **Limit** or **halt** travel with your birds to sales, shows and swaps. Ensure you have clean hands, clothes, and footwear before handling your birds if you attend events. **Do not** allow others to handle your birds.



- 3** **Limit** your birds' visitors. If someone must visit your birds: discuss where they have been. Have them wash their hands and wear clean clothes and footwear.



Call your veterinarian if your flock shows signs of influenza or you suspect exposure. No veterinarian? Call the Kansas Department of Agriculture's Division of Animal Health at 785-564-6601.

Anderson Activities

County Council Committees

National 4-H Week	All Clubs
Achievement Night Celebration	Lucky 13
County Wide Fun Event	Star Shooting
County Wide Community Service	Cherry Mound
Club Days	Lucky 13
Recognition of 4-H Seniors	Cherry Mound
District Wide Day Camp	Star Shooting
New Member Event	All Clubs
After Fair Pool Party Treats	Seekers Not Slackers
District Activity	Seekers Not Slackers



4-H Council Meeting

Our next meeting will be Sept. 8, 2025 at 7:00 p.m. in the Extension Office Meeting Room. Club Leaders will meet at 6 pm. Be sure to attend and represent your club as there must be a leader and youth representative from each club at every meeting in order for the club to be on track to receive a purple seal at year's end.



Fair Book

The Anderson County Fair Book is online on our [Frontier Extension District webpage](#). Fair Books have been given to club leaders. If you do not have yours yet, please contact your club leader. We also have extras in the Garnett Extension Office.



Fair Work Days

Fairgrounds Work Night – July 7th at 7:00 PM

It's time to roll up our sleeves and get the fairgrounds ready! The Cherry Mound and Seekers Not Slackers 4-H Clubs are planning a work evening at the fairgrounds, and all Anderson County 4-H families are invited to help out. **Date & Time: July 7th at 7:00 PM**
Location: Anderson County Fairgrounds Please wear closed-toe shoes and clothes you don't mind getting dirty. Bring work gloves and something cold to drink. There will be plenty of tasks for both younger and more experienced members—plus opportunities for parents to pitch in too!

If you have any questions, feel free to contact Jeanette. We appreciate your help in making the fair a success!

Help is also needed on **July 26th, 12:00 noon**, at the fairgrounds, to set up the displays in the Community Building and hang various signs around the fairgrounds. Please come to the Community Building to see what needs done.



Photo Mounting Instructions

Proper photo mounting instructions for all Frontier District Fairs and the Kansas State Fair are available in the fairbook. Required photo bags and matte boards are available at the Extension Office.



Quilt Raffle

Ticket packets for the quilt raffle have been given to club leaders. Please get out and sell! The money raised will be used for the Anderson County 4-H Scholarship for graduating Seniors. **Packets (tickets and money) should be returned to the Extension Office by July 18th.** Direct all questions to the Garnett Extension Office.



Fair Information and Pre-Entry

All fair entries must be pre-entered online. A [link](#) will be available June 9th-July 11th.

[Anderson County Born forms](#) for the fair are **due** in the Garnett Office by **July 11th**.

[Fashion Revue Script forms](#) are also **due** in the Extension Office by **July 11th**.

Anyone not entered during the allotted time will be assessed a \$25 late fee.

Please remember that if you are bringing more than 1 item in a project area, you must make an entry for each item that you are bringing. For example, if you are bringing 5 photos for photography, you must make 5 entries in the FairEntry program. The same is true for any project that has a limit of items that you may bring.

Pre-Fair judging will be held July 26th for Clothing, Shopping In Style, Fashion Revue, Visual Arts, Fiber Arts, and Photography.

Osage Opportunities

County Council

August 25 @ 7 p.m.

Lyndon Extension Office

Leader's Meeting at 6:30 p.m.

County Wide Fundraiser	MJH
Club Day	NO
Achievement Night Celebration	WW
District Wide Day Camp	Ambassadors
Council By-laws & National 4-H Week	BG
District Wide Event	LL

Save The Date:

Style Revue Judging:

July 9

Osage City Fair:

July 16-19, 2025

Overbrook Fair:

August 5-8



Osage City Fair Pre-Entry

Osage City Fair Pre-Entry will be June 23rd-July 7th. All entries (static, livestock and small animal) must pre-enter for the Osage City Fair using the FairEntry system. Late entries will be charged \$25 per exhibitor. Use the above link and login with your 4-H Online login information.



Style Revue Judging & Show

Style Revue Judging will take place before the fair on July 9th at 9:00 a.m. at Lyndon's First Baptist Church, 129 W. 15th Street. Registration will be required. The registration form can be found at the above link and is due July 3rd. The public Style Revue will be July 16th at 7:00 p.m. in the Community Building at the Osage City Fair. Style Revue is open to all 4-Hers enrolled in Sewing & Textile Design and Shopping In Style.



Osage County Fair T-shirts

2025 Fair t-shirts will be available for pick up on Wednesday, July 16th in the Static Building. Any shirts not picked up will be available for pick up in the office or at check in for the Overbrook Fair.



Overbrook Fair Sale Information

The Overbrook Fair sale will be a premium only sale again this year. You will need to make spots for animals to be processed and find your own floor buyers. See the link above for more information. Contact the office with any questions.



Osage City Fair Sale Information

The Osage City Fair Board is requesting youth that will be selling bring the following for the Buyer's Dinner:

Last Names A-M: a dessert

Last Names N-Z: side dish/veggie

For questions or more information, please contact an Osage City Fair Board Member.

Osage County Fair Information



Fair Set Up Dates:

Osage City Fair: Sunday July 13th from 3-6 p.m.

Overbrook Fair: Sunday August 3rd from 3-6 p.m.

All Osage County 4-H members who plan to exhibit are encouraged to help with set up. The Fair Boards greatly appreciate all the help!



Ambassador Events at the fairs

The Osage County 4-H Ambassadors will be hosting two events this summer!

Friday July 18th from 9-11 a.m.: Pancakes and Games with Ambassadors at the Osage City Fair.

Wednesday August 6th from 1-2:30 p.m.: Popsicles and Dancing with Ambassadors at the Overbrook Fair. These events are open to all! Hope to see you there!



Fair Camper Spots

For Osage City Fair: reserve your spot using FairEntry while you are entering your pre-entries. Cost is \$25 and you will pay when you check in.

For Overbrook Fair: reservations will open the week before fair. Please visit <https://overbrookfair.weebly.com/> Click on camping and you will be able to reserve there. Cost will be \$175 for 7 days.

Spots are limited at both, so do not wait to reserve. For more information about either please contact a Fair Board member from that fair.



Osage City Fair Pool Party

Osage City Fair Board will be hosting a pool party for 4-H members on Wednesday July 16th at the Osage City Pool from 6:30-8:30 p.m. Snacks and drinks will be provided.



Fair Clean Up Dates:

Osage City Fair: Sunday July 20th from 12-2 p.m.

Overbrook Fair: Sunday August 9th at 9 a.m.

All Osage County 4-H members who exhibited are encouraged to help with clean up. The Fair Boards greatly appreciate all the help! Premium money from both fairs will be available after their respective clean up times.



New for Osage City

On Saturday July 19th at 6 p.m. will be the All 4-H Exhibit Awards Ceremony in the show arena. All exhibits, animal and static, that won an award, will recognized and given their award at this time. Make sure to come out and celebrate everyone's hard work!



POOL PARTY

JULY 16TH
WEDNESDAY

OSAGE COUNTY FAIR
4-H POOL PARTY!

OSAGE CITY POOL
6:30 - 8:30PM

SNACKS & DRINKS
PROVIDED

SPONSORED BY OSAGE COUNTY FAIR BOARD



Pancakes & Games

with the Ambassadors

Osage City Fair
Friday, July 18th
9:00 - 11:00
Show Arena

K-STATE Research and Extension
Kansas State University Agricultural Experiment Station and Cooperative Extension Service
K-State Research and Extension is an equal opportunity provider and employer.

Frontier District

Popsicles & Dancing

with the Ambassadors

Overbrook Fair
Wednesday, Aug 6th
1:00 - 2:30
livestock arena

K-STATE Research and Extension
Kansas State University Agricultural Experiment Station and Cooperative Extension Service
K-State Research and Extension is an equal opportunity provider and employer.

Frontier District

Franklin Festivities

County Council

Sept. 29th, 6:30 p.m. @
Commission Chambers, 1418 S.
Main, in Ottawa (down the hall
from the Extension Office)

Club Day	RR
District Wide Day Camp	BGG & AR
Livestock Buyer Appreciation	SH
National 4-H Week Marketing	FOP & SS
Achievement Night Celebrations	RW
District Wide Event	PGB
Community Service & Fair Goody Plates	AT

Save the Date

Franklin County Fair;
July 14-19, 2025



Concession Stand Sign-Up

Please remember this is our only fundraiser, it is important that everyone works their shift! Be sure to let your friends and family know to come support us at our concession stand!

- Please arrive **10-15 minutes early** to ensure a smooth transition.
- There is **limited space**, so please be mindful of extra things you bring to your shift.
- Please wear **closed toe shoes**.

We truly appreciate your time, your support, and your dedication to 4-H. If you have any questions, please contact the office. Thank you!



Fair Grievance Policy

There is a Fair Grievance Policy for the 2025 Franklin County Fair. It will be in the Fair Book. Please contact the office with questions and concerns you may have.



Photo Mounting Instructions

Proper photo mounting instructions for all Frontier District Fairs and the Kansas State Fair is available in the fair book. Required photo bags and matte boards are available to purchase in the Extension Office. Photo mat/bag combos are \$2 each.



National Anthem

Last year we had some fabulous voices sing the National Anthem! Please call the office to sign up if you would like to sing the national anthem at the fair.



Fair T-Shirt

Be sure to express your appreciation to Patriots Bank for their donation for our 2025 Fair shirts!

An email will be sent out to Club leaders to pick up shirts from the Extension Office in Ottawa and distribute to the club. Please wear your shirts to Fair Kick off on **July 14th** at 6:00 pm.

Franklin Festivities



Franklin County Fair Info.

Bucket Calf: Members enrolled in Clothing or Bucket Calf have paperwork which must be presented at judging time during the Franklin County Fair. Bucket Calf members must present the project record sheet.

Clover bud: You must call the office to schedule a time for Cloverbud judging. Judging is **July 15th** begins at 12:00 p.m.

Concession Stand Sign up: Sign-up will be open June 1st -16th. Each family will need to have one adult sign up to work as well as every 4-H Member!

Pre-Fair Judging: July 7th-Clothing, Fiber Arts, Mr./Miss 4-H Interviews; 1st Baptist Church, 410 S. Hickory, Ottawa

July 14th-Foods (9 AM-11 AM, club assigned times), CB Hall; Photo & Visual Arts (1:30-4:00 P.M., club assigned times), CB Hall

July 14th-Fair Kick-Off 6:00 - 8:00 p.m.



Club Assigned Judging Times, July 14th

Foods: 9:00 a.m.-11:00 a.m.

9:00-9:30 S.H.A.F.F. , Shooting Sports

9:30-10:00 Princeton Goal Busters, Full-O-Pep

10:00-10:30 Rambling Ranchers, Rowdy Wranglers

10:30-11:00 Burg Go Getters, Acorn Rustlers, Appanoose Trailblazers

Photography and Visual Arts; 1:30 p.m.-4:00 p.m.

1:30-2:10 Burg Go Getters, Acorn Rustlers, Appanoose Trailblazers

2:10-2:50 Rambling Ranchers, Shooting Sports

2:50-3:20 Rowdy Wranglers, S.H.A.F.F.

3:20-4:00 Full-O-Pep, Princeton Goal Busters



Fair Kick off

Join us **Monday, July 14th** at 6:00 p.m. for a fun-filled evening of games, food, music, and dancing as we celebrate the start of Fair Week in style! Wear your 2025 Fair T-shirt, bring your glow sticks, and get ready to light up the night with your best dance moves!

A huge thank you to the Rambling Ranchers 4-H Club for hosting this exciting event once again—we're so grateful for your energy and dedication!

Let's make this a night to remember as we Giddy Up & Glo into an amazing week at the Franklin County Fair!



Fair Food Drive

The Appanoose Trailblazers are saddling up for a great cause! This year at the Franklin County Fair, we're hosting a Food Drive to support the Connect Mobile Food Pantry, and the 4-H Council couldn't be more excited! Our 4-H members are known for their big hearts—and now it's time to show it. Let's fill the stock tank FULL with much-needed items like peanut butter, pasta sauce, granola bars, canned soup, boxed milk, canned chicken, and tuna. Collection begins during Fair Kick Off Night and runs through Friday night.

Giddy Up & Glo isn't just the fair theme—it's your chance to shine by giving back. Check out the attached flyer for all the details and let's make a difference, one can at a time!



2025 FRANKLIN COUNTY FAIR

Giddy Up & Glow Kick Off

JULY 14TH, AT 6:00 P.M.

THERE WILL BE GAMES, FOOD, ETC..

BRING YOUR BEST DANCE MOVES!





BRING ANY PET THAT CAN BE SAFELY CONTAINED!

FRANKLIN CO PET PARADE

Giddy Up
& Glow



July

18

2025



HAYWARD ARENA @ FRCO FAIRGROUNDS

OPEN CLASS & 4-H WELCOME!

REGISTRATION BEGINS @ 8:30 AM

PARADE @ 9 AM

AWARDS WILL BE HANDED OUT



Giddy Up & Glo with generosity!

Giddy Up & Glo isn't just this year's theme - it's a call to action!
Let your generosity shine by donating canned and non-perishable
food items to support the Connect Mobile Food Pantry.

Franklin County Food Council Food Drive

About the Food Drive

From July 14 to 31, we're collecting canned food and non-perishable items for the Connect Mobile Food Pantry.

Items Needed

- Canned chicken
- Canned fish (tuna)
- Pasta
- Rice
- Cereal
- Peanut butter
- Pasta sauce
- Granola bars
- Canned soup
- Boxed milk

Drop Off Locations

Celebration Hall during the Franklin County Fair (July 14–18) and through July at the Extension Office, 1418 S. Main, Ste. 2.

What is the Connect Mobile Food Pantry?

A collaboration between the Franklin County Food Policy Council, USD #290 and East Central Kansas Action Network (ECKAN), CONNECT provides a variety of pantry, fresh and frozen foods, as supplies allow, to Ottawa and outlying rural communities and the elderly.

By delivering to a centralized location in each community, it helps address the transportation issues experienced by many of our neighbors when trying to provide food for their families.

Participating Organization:



Handy Links!

Please follow the links for more information

4-H Policy

The current KSRE and 4-H practices cover the new requirements and are now included as a reference in the policy.

Electronic Treasurers Book

An electronic version of the Treasurer's Book is available for any club or group to use. Located at the bottom of page on the club resource's page!

Helpful Resources

Here are some resources to help guide you in projects, or any national curriculum that might be helpful!

Raffle Policy and Guidelines

Any Extension unit-affiliated group (e.g. 4-H club, 4-H project group, etc.) wanting to conduct a raffle must first fill out and submit an application.

Frontier District Website

This is our website that holds lots of great information!

Frontier District Facebook

Follow us on Facebook for updated information!

Kansas 4-H Website

This is the Kansas 4-H website and is an excellent resource. Information about state events, project materials and the state 4-H newsletter is available.

District Wide Project Leaders

A list of District-wide projects and leaders is available to Frontier District 4-H members.

Disabilities Accommodations Request Form

The Americans with Disabilities Act (ADA) requires persons with disabilities be provided "reasonable" accommodations and prohibits discrimination against persons with disabilities. Accommodations are generally considered reasonable if they don't change the fundamental nature of the program or alter the essential criteria for participation. Accommodations meeting these standards should typically be provided. Reasonable accommodations are determined through an interactive process between the community member and local and State 4-H Offices. It is essential for the Accommodation Request Form to be filled out FIRST at the local level in collaboration with a local Extension Professional to launch a formal accommodations process. Because it can take time to plan for accommodations, KSRE requests this form be submitted no later than two weeks prior to the event/activity. Submitting a request on shorter notice may reduce and/or limit any ability to implement accommodations.



Meet the Staff

Rebecca McFarland

District Director
Family and Community Wellness
Agent
Ottawa Office
785-229-3520
rmcfarla@ksu.edu

Janae McNally

District Agent
Adult Development and Aging
and Family Resource Management
Lyndon Office
785-828-4438
jmcnally@ksu.edu

Ryan Schaub

District Agent
Crop Production and Farm
Management
Garnett Office
785-448-6826
reschaub@ksu.edu

Rod Schaub

District Agent
Livestock Production
Lyndon Office
785-828-4438
rschaub@ksu.edu

Chelsea Richmond

District Agent
Nutrition, Food Safety and Health
Garnett Office
785-448-6826
crichmon@ksu.edu

Lauren Gammill

District Agent
Horticulture and Natural Resources
Ottawa Office
785-229-3520
laurengammill@ksu.edu

Jessica Flory

District Agent
4-H Youth Development
Ottawa Office
785-229-3520
jrflory@ksu.edu

Jo Hetrick-Anstaett

4-H Program Manager
Lyndon Office
785-828-4438
janstaett@ksu.edu

Josie Medlen

4-H Program Manager
Ottawa Office
785-229-3520
josie03@ksu.edu

Jeanette Stinebaugh

4-H Program Manager
Garnett Office
785-448-6826
jlstineb@ksu.edu

Jamie Guenther
Office Professional
Ottawa Office
785-229-3520
jguenther@ksu.edu

Liz Drennan

Office Professional
Garnett Office
785-448-6826
edrennan@ksu.edu

Anita Sobba

Nutrition Educator - Kansas SNAP-ED
Program
Garnett Office
785-448-6826
anitasobba@ksu.edu

Kris Wallace

Nutrition Educator - SNAP-ED
Ottawa Office
785-229-3520
krwall@ksu.edu

Janaya Reed

Financial Manager and Office
Professional
Lyndon Office
785-828-4438
jlhamlin@ksu.edu

Carol Engle

Communications & Marketing
Manager
Ottawa Office
785-229-3520
carolengle@ksu.edu