

# 4-H UPDATE

April 2025

Garnett Office  
411 S. Oak  
PO Box 423  
Garnett KS 66032-0423  
Phone: 785-448-6826  
FAX: 785.448.6153

Lyndon Office  
128 W. 15th  
PO Box 400  
Lyndon KS 66451  
Phone: 785-828-4438  
FAX: 785.828.3427

Ottawa Office  
1418 S. Main,  
Suite 2  
Ottawa KS 66067  
Phone: 785-229-3520  
FAX: 785.229.3527

## **GREAT THINGS HAPPENING....**

Spring was a blast! This years the Frontier District hosted three day camps, YQCA Training and Livestock, Quilting and Shopping in Style and STEM! We had roughly 100 youth in total attend the camps combined. Check out the photo collage to see everyone's happy faces!

## **Celebrating Volunteers: A Heartfelt Tribute**

As we approach National Volunteer Week from April 20-26, it's a perfect time to celebrate and recognize the invaluable contributions of volunteers across our communities. They embody the spirit of giving, demonstrating that time and effort can transform lives.

In the Frontier District, we are fortunate to have a dedicated group of volunteers who pour their hearts into improving the lives of others. With 230 screened volunteers, each contributing an average of 2-3 hours monthly, the impact is profound. When we consider the value of their contributions, the estimated \$17.07 per hour translates to a considerable monetary equivalent of approximately \$8,000 to \$12,000 each month. This figure represents dollars and the countless lives they touch through their selfless actions. That doesn't include the work and volunteer hours that go into fair and other special events. "Volunteers do not necessarily have the time; they just have the heart." – Elizabeth Andrew. This quote resonates deeply with me as I reflect on the incredible individuals who have impacted my own.

Read more on page 3!

## **AT A GLANCE**

- [Calendar](#)
- [CIA Photos](#)
- [Club Day Photos](#)
- [Enrollment](#)
- [Setting Project Goals](#)
- [Kansas Clover Classroom](#)
- [Rock Springs Camp](#)
- [Walk Kansas](#)
- [Scholarships](#)
- [Entomology](#)
- [Horse Project Updates](#)
- [District Clubs](#)
- [Day Camp](#)
- [Anderson Activities](#)
- [Osage Opportunities](#)
- [Franklin Festivities](#)
- [Meet the Staff](#)

## **OFFICES CLOSED**

- May 26th
- June 19th
- July 4th

# 4-H Calendar

## APRIL

**Apr. 12** Shutterbugs at the Zoo

**Apr. 19** [Purple Pastures Showdown](#)

**Apr. 20** Last Day to Order Market Beef DNA Envelopes for Nominations

**Apr. 20-26** National Volunteer Week

**Apr. 23** FR CO. Small Animal Weigh-In

## MAY

**May 1** Market Beef Nominations Due

**May 1** Last Day to Add/Drop Projects

**May 3** Shutterbug; Botanica Garden

**May 3-4** [Gary Fuller Spring Classic](#)

**May 6** OS CO. Small Animal Weigh-In

**May 7** AN CO. Small Animal Weigh-In

**May 24** [Blazin' the Ring Spring Classic](#)

**May 27** OS CO. Fav. Foods Contest

**May 28** FR CO. Fav. Foods Contest

**May 29** AN CO. Fav. Foods Contest

**May 31** Anderson County spring show

[Local Kansas Spring Shows](#)

## JUNE

**June 2** SE Area Livestock Judging Contest

**June 5** Last Day to Order Small Animal DNA Envelopes for Nominations

**June 10** Board Game Day Camp in Garnett

**June 12** SE Area Photo and FCS Judging Contest

**June 15** Small Animal Nominations Due

## JULY

**July 10-12** Richmond Free Fair

**July 14-19** Franklin County Fair

**July 16-19** Osage City Fair

**July 28-Aug 1** Anderson County Fair

## AUGUST

**Aug. 5-8** Overbrook Fair

## SEPTEMBER

**Sept. 5-19** Kansas State Fair





# A message from your 4-H Agent Continue..



## **Volunteers That Touched My Life:**

Susan Sachsa: Susan has been an inspiring club leader who continuously goes above and beyond. Her heartfelt approach made a significant difference for many, including me. I cherish the handwritten notes she would send, always reminding us that we are special and valued.

DeeAnn Shuck: As a Dairy Superintendent, DeAnna played a crucial role in our growth. Her dedication went far beyond her title. She tirelessly created opportunities to excel in our Dairy Project, taught us how to evaluate and judge animals, and continuously encouraged us to push our limits. Her belief in our potential is a gift that we carry forward.

Who Has Impacted You? Reflecting on these experiences made me realize that countless individuals selflessly dedicate their time and energy to help others succeed. In the Frontier District, volunteers give their time freely, investing in the future of our youth. Their efforts foster growth and learning and build a sense of community that uplifts us all.



## **Personal Thoughts on Volunteers:**

Volunteers are the backbone of our community. They come from all walks of life, driven by a passion for helping others. Their generosity creates opportunities for learning and growth, and their support encourages us to aspire for greatness. In a world where time is often scarce, their willingness to lend a hand or share a kind word is a true blessing.

As we celebrate National Volunteer Week, let us take a moment to express gratitude for these remarkable individuals. Let's recognize their dedication and the lasting impact they have on our lives and the lives of others.

Together, we can honor their contributions by volunteering ourselves, manifesting the spirit of giving that they exemplify every day.

Thank you, volunteers, for all that you do!

Sincerely, Jessica Flory

# District Details

## Leaders have you...

### Review

- Looked over deadlines & dates?
- Promoted enrollment
- Checked Volunteer enrollment
- Encouraged 4-H members to ask a friend to attend meetings
- Reminded all 4-H members and parents who are volunteers to enroll via 4-H Online

### To-Do

- Check mailbox at the Extension Office
- Report from 4-H Council Meetings
- Update Volunteer Renewal information



### Animal Science Newsletter

Did you know that there is a monthly newsletter written by the KSU Animal Science Department. Be sure to check it out, as they write important topics, such as camps coming up, upcoming events, topics you might need to know in the barn. Check out the link above to find information you might need to know!



### Setting Project Goals

After choosing projects, it is important to plan what can be learned and accomplished. What new skills can be gained? Who is going to help along the way? Setting measurable goals will help guide youth through positive 4-H project learning experiences. This resource can help members get started!



### Kansas Clover Classroom

The Kansas Clover Classroom is an amazing 4-H project supplemental guide available to 4-H families. Taking photos, designing a cabinet, building rockets, collecting insects, tending to livestock...those activities are part of a much bigger, project-based learning process to prepare youth for the future. Which challenge will you take on?



### Rock Springs Camp 2025

Summer Camp 2025 registration open! There are eight different traditional 4-H camp dates in June and July. We recommend **Session two!** There are also three CIT dates in June and July and two LIT dates in June. They have also added a two night mini camp for rising 1st-3rd graders, as well as a Specialty camp for rising 6th-9th graders. Transportation schedules are being finalized. Check out which date and/or camp works best for you! Camperships (scholarships) are available for all levels!



### Add/Drop Deadline

The Extension Office will need to be contacted to have information changed. Any adding or dropping of projects must be done by **May 1st** in order for the member to enter in the 4-H divisions of the Fair. Direct all questions to the Extension Office.

# District Details

## Members have you... Checked off

- Re-Enrolling in 4-H?
- Asked a friend to join
- Signed Up to Present at a Club Meeting?
- Set Project Goals?
- Finalized Projects for the year?

## Review

- 4-H members: ask a friend to attend meetings
- Remind all 4-H members and parents who are volunteers to enroll via 4-H Online
- Provide officers and clubs leadership updates as soon as possible to the Extension Office



## Regional Club Days

Regional Club Day was **March 29th** at Shawnee Heights High School. Overall we had 12 kids participate in different ways with roughly 100 people competing. Results from Regional Club Day have been posted. Great job to everyone who participated, we had a great weekend, and loved seeing everyone's' talents. Be sure to check out the photos on FaceBook!



## Shutterbug Events

Shutterbug events are photography workshops put on across the state, and are a perfect opportunity to develop new camera skills, hone your creative talents and try new photography techniques. Workshops are typically scheduled as a morning session and concentrate on a variety of aspects of composition. Sessions focus on topics including Portfolio, Camera Features, Panning, Close-ups, Aperture Settings & Kaleidoscopes/Reflections.



## Rock Springs Ranch Open House

Rock Spring Ranch is offering an Open House on **April 13th** from 1:00 p.m. - 4:00 p.m. This is a great opportunity to explore the camp if you are interested in attending. Even if you have attended, come on out & bring the whole family, and see what has changed since you last went!



## Entomology Meeting

Our April Entomology project meeting will be on April 5th beginning at 1:00 p.m. at the Allen County Extension Office Meeting Room. We will be working on pinning insects so bring your pinning boards and pinning supplies as well as 2 or 3 insects to pin. Please bring a talk on an insect from Africa.



## Insect Spectacular

Beetles, bugs, dragonflies and more! It's time to get registered for the 33rd Insect Spectacular. The State Entomology Workshop will be held **June 27th and 28th**. Activities will take place at the Butler County Community Building located at 200 N. Griffith Street in El Dorado, Kansas. More information to come!

# District Details

## Member/Volunteer Enrollment

The new 4-H year began **October 1st**, so it is time for new and returning 4-H members and volunteers to enroll. All returning 4-H members and volunteers should be re-enrolled by December 1st. Projects and/or clubs will need to be added when enrolling. Project years should auto-populate, if not, please call the office. Families are also encouraged to confirm the email address and phone numbers for the family and for each member or volunteer. Direct any questions or concerns to the Extension Office.

- [Click here to enroll](#)
- Create an account
- Select your participation type
- Choose your county & club
- Select your projects (remember, once you have enrolled, if you need to add more, message your Extension Office.)
- Review consent forms, there are more this year!
- Enter member information
- Click submit!



## Horse Project Updates

The [Kansas 4-H Horse ID Certificate \(P1039\)](#) has been updated for the 2025 4-H program year. Beginning with the 2025 4-H program year, please use the new form and destroy previously used 4-H Horse ID Certificates. As a reminder, to properly identify your horse, complete the 4-H Horse ID Certificate, have your Extension Agent sign it and copy it. A COPY of the Horse ID Certificate is kept on file in the Extension Office and the 4-H Horse member maintains the ORIGINAL certificate. The original certificate is presented by the 4-H member to show staff for check-in at the local 4-H horse shows. Beginning in 2025, registration papers WILL NOT be accepted to identify horses for the 4-H Horse project. An [example of the Horse ID Certificate](#) is available online



## Important Livestock Dates

Check out the Youth Livestock Program Newsletter or “like” the Kansas State Youth Livestock Program on Facebook!

**4/20/25:** Last day to order Market Beef DNA Envelopes for Nominations

**5/1/25:** Market Beef Nominations Due for KSF & KJLS

**6/5/25:** Last day to order Small Animal Livestock DNA Envelopes for nominations

**6/15/25:** Commercial Heifer, ALL Swine, ALL Sheep and ALL Meat Goat Nominations Due for KSF & KJLS.

**9/5-14/25:** Kansas State Fair

**10/3-5/25:** Kansas Jr. Livestock Show



## KSF & KJLS Information

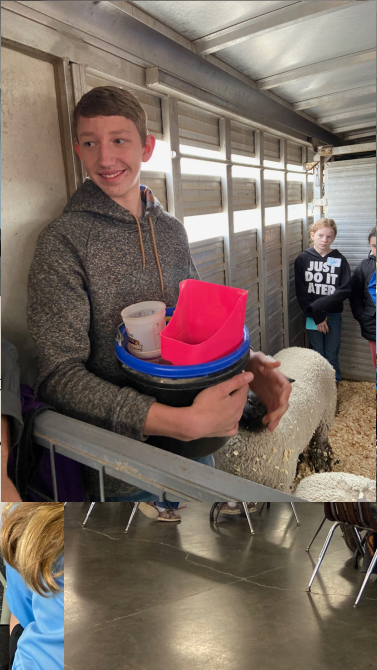
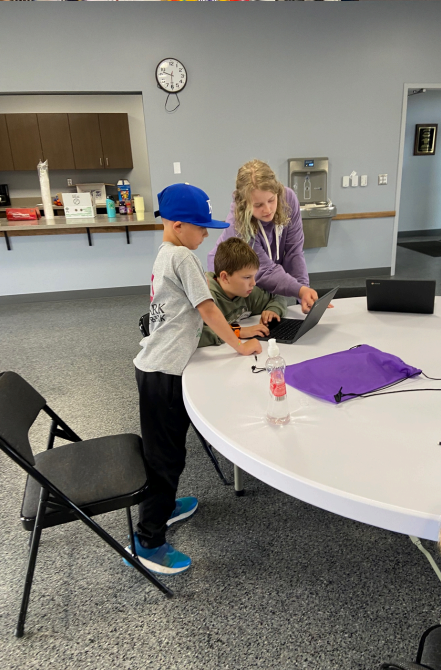
Families planning to participate in the Kansas State Fair Grand Drive or the Kansas Junior Livestock Show will need to Order DNA envelopes. Families will purchase envelopes directly through ShoWorks for each animal to be nominated. The cost will be \$12/animal.

1) DNA envelope orders will close **April 20th** for market beef and June 5th for small livestock. Families must get envelopes ordered early! DO NOT WAIT!

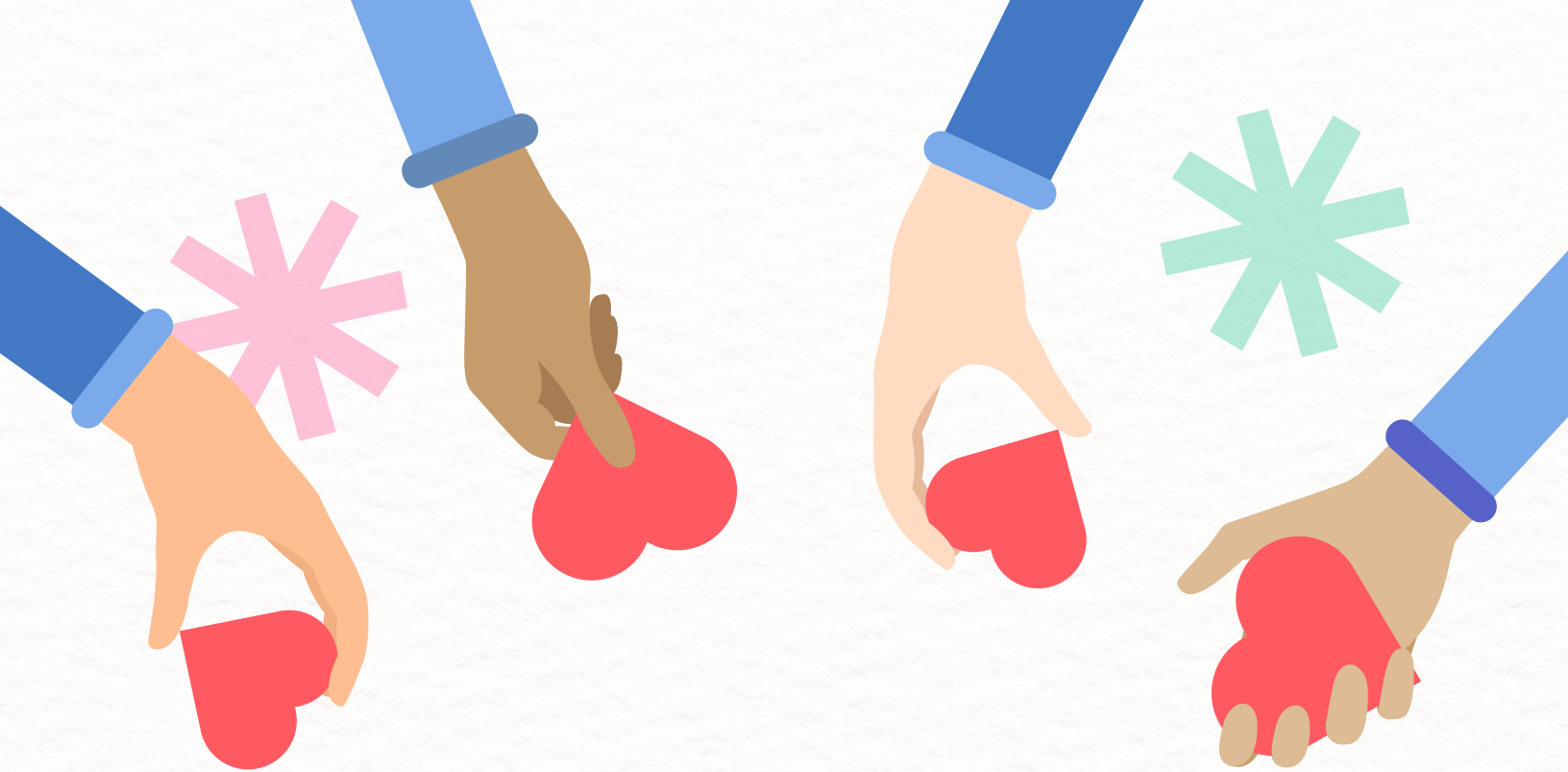
2) Market Beef Nominations due **May 1st**. Commercial Heifer, ALL Swine, ALL Sheep and ALL Meat Goat Nominations are due **June 15th**.

3) NOTE: ENTRY IS ONLINE ONLY!











# NOMINATE YOUR FAVORITE 4-H VOLUNTEER



Volunteer Appreciation Week is April 20-26! We know we have some amazing volunteers in the Frontier Extension District, and we want to know how your favorite volunteer/s helps "To Make The Best Better"! We will be showcasing our volunteers on Facebook during Volunteer Appreciation Week.

Please use this [link](#) to submit your favorite volunteer/s by April 11th. We can't wait to show our volunteers how much they mean to our program! Please let Jo in the Lyndon Office know if you have any questions!  
785-828-4438 or [janstaett@ksu.edu](mailto:janstaett@ksu.edu)



**3161 HIGHWAY K #68, OTTAWA, KS 66067**





# Save the Date!



**IN MAY**



**2025**

**TUE  
27**

## **OSAGE COUNTY FAVORITE FOODS CONTEST**

↘ 205 W 10<sup>th</sup> St, Lyndon, KS 66451

**WED  
28**

## **FRANKLIN COUNTY FAVORITE FOODS CONTEST**

↘ 410 S Hickory St, Ottawa, KS 66067

**THUR  
29**

## **ANDERSON COUNTY FAVORITE FOODS CONTEST**

↘ 510 North Lake Road, Garnett, KS 66032

**EACH WILL HAVE A FAVORITE FOOD  
CONTEST AND FSC JUDGING CONTEST**

**For more information:**



**Call your local office**

# GRAND DRIVE & KJLS IMPORTANT DATES

<b>April 20</b>	<b>Last Day to Order Beef DNA Envelopes</b>
<b>May 1</b>	<b>Market Beef Nominations Due Online &amp; DNA Postmarked</b>
<b>June 5</b>	<b>Last Day to Order Small Livestock DNA Envelopes</b>
<b>June 15</b>	<b>Small Livestock Nominations Due Online &amp; DNA Postmarked</b> <ul style="list-style-type: none"><li>-Market Swine, Commercial Breeding Gilt</li><li>-Market Lamb, Commercial Breeding Ewe</li><li>-ALL Meat Goat (<i>Market &amp; Breeding</i>)</li></ul>
	<b>Commercial Heifer Nominations Due Online &amp; DNA Postmarked</b>
	<b>Registered Breeding Heifer Papers in Exhibitor's Name</b>
	<b>Registered Steer Papers in Exhibitor's Name</b>
	<b>Registered Breeding Gilt Papers in Exhibitor's Name</b>
<b>July 1</b>	<b>Registered Breeding Ewe Papers in Exhibitor's Name</b>
<b>July 15</b>	<b>Kansas State Fair Grand Drive Entry Deadline</b>
<b>July 25</b>	<b>Kansas State Fair Grand Drive Late Entry Deadline</b>
<b>August 15</b>	<b>KJLS Entry Deadline</b>
<b>August 31</b>	<b>KJLS Late Entry Deadline</b>
<b>Sept. 5 - 7</b>	<b>Kansas State Fair Grand Drive</b>
<b>Oct. 3 - 5</b>	<b>KJLS</b>

\*All market animals must be nominated to be eligible for either show, regardless of breed or gender.

\*\*All commercial breeding females must be nominated to be eligible for either show.

\*\*\*Registered breeding females must be in the exhibitor's name by the appropriate date to be eligible for either show. Refer to show rules for details.

\*\*\*\*All meat goats, including market, commercial breeding does, and registered breeding does must be nominated to be eligible for either show.



# cool careers

## Student Edition



**1**

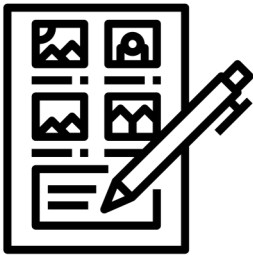
Want to know how to get started with our NEW Cool Careers contest?

**2**

You, or a group up to four 4-H members, select a job or profession within one of your 4-H projects you want to learn more about.

**3**

Identify someone in that profession you would like to interview and get the ball rolling!



Plan your interview questions & storyboard



Interview your professional & video/film



Edit video segments & add music & graphics

Use technology you already have access to:  
phone, tablet,  
video camera  
or laptop!

For video examples,  
graphics, music content and  
registration form visit  
**[www.kansas4-H.org](http://www.kansas4-H.org)**



# JOIN US!

Summer 2024

## FEEDING YOUR FUTURE

### *Agriculture Camp*

High school students, sophomores to seniors, will attend a 4-day agriculture immersion camp featuring the Departments of **Grain Science** and **Agronomy** at Kansas State University.

<https://www.ag.k-state.edu/ag-experiences/summer-camps/>

**July 16-20, 2024**

**AGRONOMY**

**MILLING SCIENCE**

**BAKERY SCIENCE**

**FEED AND PET FOOD SCIENCE**

**FOR MORE INFORMATION:**

Deana Core, Assistant Dean, 785-532-6151, [dcore@ksu.edu](mailto:dcore@ksu.edu)

**KANSAS STATE**  
UNIVERSITY | College of Agriculture

# INSECT ART CONTEST

## 2025

*By the Light of the Moon: Insects at Night*



The K-State Research and Extension Pesticide Safety and IPM Program is hosting its annual insect-themed art contest, open to all ages and skill levels in Kansas. This year, the theme is "*By the Light of the Moon: Insects at Night*." The goal is to explore which insects are active or inactive at night and why, then create artwork that fits the contest theme.

### AGE GROUPS

- Kindergarten - 2nd
- Grade 3rd Grade - 5th
- Grade 6th Grade - 8th
- Grade High School
- Adults

### CATEGORIES

- Traditional Illustration (drawing or painting)
- Digital Artwork
- 3-D Creation (painting on canvas, collage, sculpture, or other media)

### AWARDS

Certificates and prizes will be awarded for each art category in each age group for 1st through 3rd place.

## HOW TO ENTER



Submit your entry by April 15, 2025. See full rules and details by visiting <https://www.ksre.k-state.edu/pesticides-ipm> or by scanning the QR code.

**K-STATE**  
Research and Extension

Integrated Pest Management  
and Pesticide Safety Education

Kansas State University Agricultural Experiment Station and Cooperative Extension Service K-State Research and Extension is an equal opportunity provider and employer. Issued in furtherance of Cooperative Extension Work, Acts of May 8 and June 30, 1914, as amended. Kansas State University, County Extension Councils, Extension Districts, and United States Department of Agriculture Cooperating, Ernie Minton, Director.



Highly pathogenic avian influenza, or HPAI, is a rapidly spreading viral disease that can infect many types of birds. Avian influenza, often called avian flu or bird flu, can be common, but some strains are highly pathogenic, which means they are more deadly. Introduced by migrating wild birds, HPAI can spread through spring migration and affect all domestic poultry — small and backyard flocks as well as commercial industries.

Poultry with HPAI do not survive the illness. Vaccines for HPAI are not readily available.

### Signs of Avian Influenza

- Coughing and sneezing
- Difficulty breathing
- Extreme depression
- Lack of energy
- Decrease in feed or water intake
- Swelling or purple discoloration of head, eyelids, comb, wattle and legs
- Decrease in egg production
- Sudden unexplained death

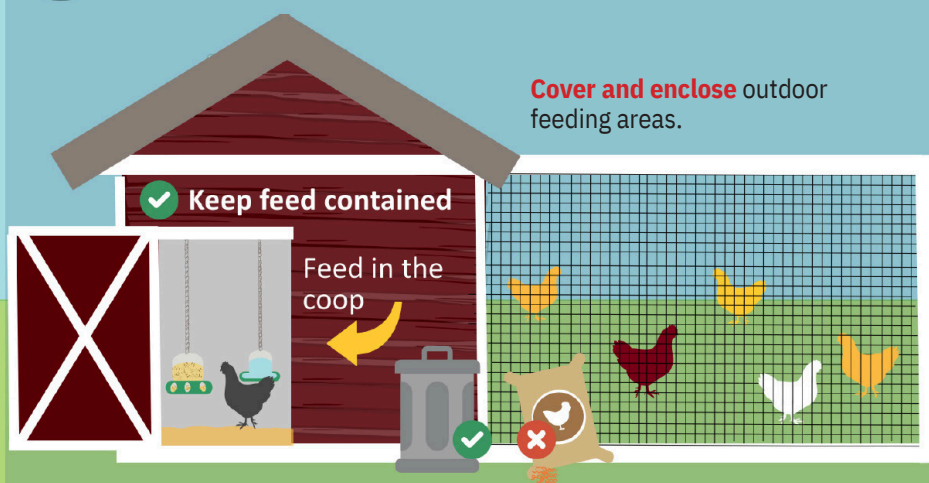
Biosecurity is your best option to prevent HPAI from entering your small or backyard poultry flock.

### Here is what you can do:

## Protect Your Small Flock from Avian Influenza

1

**Avoid** attracting wild birds and waterfowl to your home or farm. Song birds, sparrows, starlings, etc. are **low risk**.



**Clean up** feed spills.  
**Reduce** puddles and standing water.  
**Avoid** visiting ponds and streams, especially with pets.  
**Do not** move birds from farm to farm.  
**Isolate** new birds.

2

**Limit** or **halt** travel with your birds to sales, shows and swaps. Ensure you have clean hands, clothes, and footwear before handling your birds if you attend events. **Do not** allow others to handle your birds.



3

**Limit** your birds' visitors. If someone must visit your birds: discuss where they have been. Have them wash their hands and wear clean clothes and footwear.



Call your veterinarian if your flock shows signs of influenza or you suspect exposure. No veterinarian? Call the Kansas Department of Agriculture's Division of Animal Health at 785-564-6601.

# EGG SHOT



**Join us for a good cause on  
Sunday, May 4, 2025 at 1 pm  
at 15303 S Osage Rd, Burlingame KS 66413**

**Cost is \$25 to shoot (cash or check only)**

**This money raised from shooters fee will go to  
Osage Co 4-H Shooting Sports**

**Registration starts 12:30 pm**

**There will be optional \$5 entry in winners pot for cash prize!  
50 cent ante (per round) goes to shooter(s) with hit. Bring your quarters!!**

**Shooting distances  
85yds 22LR & 17HM2  
100 yds 17 HMR & 22 Mag  
200 yds all other Rifles**

**Bring your lawn chairs and snacks  
If raining at time of shoot we will reschedule**



# Anderson Activities

## County Council Committees

National 4-H Week	All Clubs
Achievement Night Celebration	Lucky 13
County Wide Fun Event	Star Shooting
County Wide Community Service	Cherry Mound
Club Days	Lucky 13
Recognition of 4-H Seniors	Cherry Mound
District Wide Day Camp	Star Shooting
New Member Event	All Clubs
After Fair Pool Party Treats	Seekers Not Slackers
District Activity	Seekers Not Slackers



### 4-H Council Meeting

Our next meeting will be **March 10, 2025 at 7:00 p.m. in the Extension Office Meeting Room.** Be sure to attend and represent your club as there must be a leader and youth representative from each club at every meeting in order for the club to be on track to receive a purple seal at year's end.



### Animal Weigh-In and Tagging Dates

Small Animal: **May 7, 2025, 5-7 p.m. at the fair grounds**

**Note:** Per Fair board rules, all tagging for county fair must be done prior to or at weigh-in only. If missed, the animal will be ineligible to be shown at the Anderson County Fair.



### DNA Envelopes

Families planning to participate in the Kansas State Fair Grand Drive or the Kansas Junior Livestock Show will need to order DNA envelopes. Families will purchase envelopes directly through ShoWorks for each animal to be nominated. The cost will be \$12/animal. DNA envelope orders will close April 20th for market beef and June 5th for small livestock. **Families must get envelopes ordered early! DO NOT WAIT!**



### Anderson County Born Nominations Form

Anderson County Born Nomination Forms for the fair are due in the Garnett office by the Fair Entry deadline. That date is not determined as of yet. Forms are available at the Extension office and on our Extension webpage.



### Add/Drop Project Deadline

The Extension Office will need to be contacted to have information changed. Any adding or dropping of projects must be done by **May 1st** in order for the member to enter in the 4-H division of the Fair. Members will not be able to change project information after the deadline. Direct all questions to the Extension Office.



### Important Livestock Dates

Check out the Youth Livestock Program Newsletter or "like" the Kansas State Youth Livestock Program on Facebook!  
5/1/24: Market Beef Nominations Due for KSF & KJLS  
6/15/24: Commercial Heifer, ALL Swine, ALL Sheep and ALL Meat Goat Nominations Due for KSF & KJLS



### Anderson County Scholarship

Anderson County 4-H Council has combined the out-of-county scholarship and the Jeanette Arnett Scholarship. The new scholarship will be called the **4-H Event Scholarship.** This will be for \$100 and may be received only once per 4-H year. This may be used to help cover the cost of an in person or virtual event. Applications may be obtained from the Extension Office and must be submitted prior to the event payment deadline.



# SAVE THE DATE

# BOARD GAME

# DAY CAMP



**TUESDAY, JUNE 10, 2025**

**9 AM-3 PM**



**BOARD GAMES**

**LUNCH**

**REFRESHMENTS**

**THE EVENT IS OPEN TO AGES 7-18**

**FEEL FREE TO JOIN ALONE OR BRING ALONG YOUR FRIENDS**

**HELD AT THE COMMUNITY BUILDING ON THE**

**ANDERSON COUNTY FAIRGROUNDS**

**GARNETT, KS**

**MORE INFORMATION COMING SOON**



# Osage Opportunities

## County Council

April 28th @ 7 p.m.

Leader's Meeting @ 6:30 p.m.

Lyndon Extension Office

County Wide Fundraiser	MJH
Club Day	NO
Achievement Night Celebration	WW
District Wide Day Camp	Ambassadors
Council By-laws & National 4-H Week	BG
District Wide Event	LL

## Save The Date:

### Osage City Fair:

July 16-19, 2025

### Overbrook Fair:

August 5-8



## Shooting Sports Schedule

Shotgun Schedule:

Sundays 10 a.m. at 15303 S Osage Rd, Burlingame

March 30th, April 6, 13 and 27th

Members must be eight years old by January 1st, to participate. Some disciplines have other age restrictions. Shooters MUST attend the first date of discipline for safety training, review of 4-H code of conduct and to complete all paperwork. Direct any questions to Marcie at 785-640-2270 or [mkquaney@gmail.com](mailto:mkquaney@gmail.com).



## Spring Tagging and Weigh In

Small Animal: **May 6th, 2025**, 4-6 p.m. at the Osage City Fairgrounds. Small animals include: bucket calf, and market and breeding swine, sheep and goat.

Youth enrolled in Breeding beef, Dairy, Market and Breeding Meat Goat, Sheep, and Swine must own and have possession of animals by **May 15th**.

Youth enrolled in the Rabbit and Poultry project must own/have possession of animals by **June 15th**.

A bucket calf must have been born **Jan. 1st-May 1st** of the current 4-H year.



## Osage County HAY Club

Osage County Horse and Youth (H.A.Y) will have a meeting on April 13<sup>th</sup> at 2p.m. at the Lyndon Saddle Club. For more information please contact Dorothy Christiason at 785-806-5786.



## Osage County Family Nomination Forms

All Osage County Livestock families need to fill out the Family Nomination Form and either return it to the Extension Office or email to Jo at [janstaett@ksu.edu](mailto:janstaett@ksu.edu). This is due by June 1<sup>st</sup>.

# Franklin Festivities

## County Council

TBT, 7:00 p.m. @ Commission Chambers, 1418 S. Main, in Ottawa (down the hall from the Extension Office)

Club Day	RR
District Wide Day Camp	BGG & AR
Livestock Buyer Appreciation	SH
National 4-H Week Marketing	FOP & SS
Achievement Night Celebrations	RW
District Wide Event	PGB
Community Service & Fair Goody Plates	AT

## Save the Date

Franklin County Fair;  
July 14-19, 2025

## Livestock Weigh-In & Tagging

Small Animal - **April 23th, 2025**; 4:00-6:00 p.m. at the Fair grounds, 220 W. 17th, in Ottawa. Small animal includes Swine, Sheep, and Goat. We will only be using EID Tags.

This year we only will be using **EID tags for all animals**. They will cost \$3.00 a tag, and you must pay for tags at weigh in. There will no longer be invoices, so please have exact change or check available at weigh-in.

## Scholarships

Franklin County Farm Bureau - April 1st, 2025

Ottawa Co-op - April 1st, 2025

## Horse Club Practice

The Franklin County Horse Club next meeting is **April 1st** from 6:00 - 8:00 pm. Practices will be every Tuesday and Thursday starting **May 20th** weather permitting also from 6:00-8:00 pm. Check out the Franklin County Horse 4-H Horse Club on Facebook for regular updated information!

## Franklin County Fair Updates

Our team, including members from Extension, the Fair Board, and Superintendents, has been actively discussing some rule changes aimed at enhancing our fair experience and aligning closely with State Fair guidelines. Please read the letter attached. For any questions please contact the office.

## Shooting Sports Practice

Franklin County Shooting Sports will only offer archery for the upcoming year. Practices will begin sometime this **April 26th** at 8:30 am. Everyone who is wanting to participate this year must be present for this first practice! A well, they are looking for other discipline leaders! Practice dates will be listed when available and will also be sent to those who are enrolled in the project. Direct any and all questions to Becky Cain at [FranklinCountyShootingSports@gmail.com](mailto:FranklinCountyShootingSports@gmail.com) as she is the current program coordinator.

## Save the Date

Save these dates for fair time! Fair Pre-Registration is **May 19th - June 16th**. Also due **June 16th** is Family Nominations, Born and Raised forms and Mr./Miss. 4-H Applications. More information coming soon!

# Handy Links!

Please follow the links for more information

## **4-H Policy**

The current KSRE and 4-H practices cover the new requirements and are now included as a reference in the policy.

## **Electronic Treasurers Book**

An electronic version of the Treasurer's Book is available for any club or group to use. Located at the bottom of page on the club resource's page!

## **Helpful Resources**

Here are some resources to help guide you in projects, or any national curriculum that might be helpful!

## **Raffle Policy and Guidelines**

Any Extension unit-affiliated group (e.g. 4-H club, 4-H project group, etc.) wanting to conduct a raffle must first fill out and submit an application.

## **Frontier District Website**

This is our website that holds lots of great information!

## **Frontier District Facebook**

Follow us on Facebook for updated information!

## **Kansas 4-H Website**

This is the Kansas 4-H website and is an excellent resource. Information about state events, project materials and the state 4-H newsletter is available.

## **District Wide Project Leaders**

A list of District-wide projects and leaders is available to Frontier District 4-H members.

## **Disabilities Accommodations Request Form**

The Americans with Disabilities Act (ADA) requires persons with disabilities be provided "reasonable" accommodations and prohibits discrimination against persons with disabilities. Accommodations are generally considered reasonable if they don't change the fundamental nature of the program or alter the essential criteria for participation. Accommodations meeting these standards should typically be provided. Reasonable accommodations are determined through an interactive process between the community member and local and State 4-H Offices. It is essential for the Accommodation Request Form to be filled out FIRST at the local level in collaboration with a local Extension Professional to launch a formal accommodations process. Because it can take time to plan for accommodations, KSRE requests this form be submitted no later than two weeks prior to the event/activity. Submitting a request on shorter notice may reduce and/or limit any ability to implement accommodations.



# Meet the Staff

**Rebecca McFarland**

District Director  
Family and Community Wellness  
Agent  
Ottawa Office  
785-229-3520  
[rmcfarla@ksu.edu](mailto:rmcfarla@ksu.edu)

**Janae McNally**

District Agent  
Adult Development and Aging  
and Family Resource Management  
Lyndon Office  
785-828-4438  
[jmcnally@ksu.edu](mailto:jmcnally@ksu.edu)

**Ryan Schaub**

District Agent  
Crop Production and Farm  
Management  
Garnett Office  
785-448-6826  
[reschaub@ksu.edu](mailto:reschaub@ksu.edu)

**Rod Schaub**

District Agent  
Livestock Production  
Lyndon Office  
785-828-4438  
[rschaub@ksu.edu](mailto:rschaub@ksu.edu)

**Chelsea Richmond**

District Agent  
Nutrition, Food Safety and Health  
Garnett Office  
785-448-6826  
[crichmon@ksu.edu](mailto:crichmon@ksu.edu)

**Lauren Gammill**

District Agent  
Horticulture and Natural Resources  
Ottawa Office  
785-229-3520  
[laurengammill@ksu.edu](mailto:laurengammill@ksu.edu)

**Jessica Flory**

District Agent  
4-H Youth Development  
Ottawa Office  
785-229-3520  
[jrflory@ksu.edu](mailto:jrflory@ksu.edu)

**Jo Hetrick-Anstaett**

4-H Program Manager  
Lyndon Office  
785-828-4438  
[janstaett@ksu.edu](mailto:janstaett@ksu.edu)

**Josie Medlen**

4-H Program Manager  
Ottawa Office  
785-229-3520  
[josie03@ksu.edu](mailto:josie03@ksu.edu)

**Jeanette Stinebaugh**

4-H Program Manager  
Garnett Office  
785-448-6826  
[jlstineb@ksu.edu](mailto:jlstineb@ksu.edu)

**Kierstyn Blaufuss**

Office Professional  
Ottawa Office  
785-229-3520  
[kierstynb@ksu.edu](mailto:kierstynb@ksu.edu)

**Liz Drennan**

Office Professional  
Garnett Office  
785-448-6826  
[edrennan@ksu.edu](mailto:edrennan@ksu.edu)

**Anita Sobba**

Nutrition Educator - Kansas SNAP-ED  
Program  
Garnett Office  
785-448-6826  
[anitasobba@ksu.edu](mailto:anitasobba@ksu.edu)

**Kris Wallace**

Nutrition Educator - SNAP-ED  
Ottawa Office  
785-229-3520  
[krwall@ksu.edu](mailto:krwall@ksu.edu)

**Janaya Reed**

Financial Manager and Office  
Professional  
Lyndon Office  
785-828-4438  
[jlhamlin@ksu.edu](mailto:jlhamlin@ksu.edu)

**Carol Engle**

Communications & Marketing  
Manager  
Ottawa Office  
785-229-3520  
[carolengle@ksu.edu](mailto:carolengle@ksu.edu)